



# dr.jsmlm

**Dr JS Moroka Local Municipality**  
**OFFICE OF THE SPEAKER**

Address: 2601/3 Bongimfundo Street, Siyabuswa  
Postal Address: Private Bag X4012, Siyabuswa, 0472  
Tel: (013) 973 1101/1390  
Fax: (013) 973 2463/0974  
Customer Care Line: 0800 MOROKA (66752)  
Website: www.moroka.gov.za  
Email: speaker@moroka.gov.za  
Facebook: Dr JS Moroka Local Municipality  
Twitter: @DrJS\_Moroka

Enq: Zulu L T

23 May 2024

**TO: EXECUTIVE MANAGER ADMINISTRATION & CORPORATE SERVICES**

1. You are hereby informed that Council at its special meeting held on the 23 May 2024 resolved as follows:

**R330.05.2024ND MUNICIPAL STAFF ESTABLISHMENT  
(ORGANISATIONAL STRUCTURE) AND  
EMPLOYEE COST**

1. **THAT,** Council note the current reviewed organisational structure and its costs;
  2. **THAT,** Council note the total number of 890 posts, of which 495 are filled and 395 are vacant for 2024/2025 financial year;
  3. **THAT,** Council note that the 2024/2025 reviewed organisational structure, includes the section 54 and 56 managers (Senior Managers);
  4. **THAT,** Council note the advertised posts as per Item 5;
  5. **THAT,** Council note the financial implications as per item 6.1;
  6. **THAT,** Council approves the organisational structure as well as its employee costs as reflected in the attachments.
2. Please ensure that the above resolution of Council is dealt with.

  
.....  
**CLLR. NKOANE M.R.**  
**SPEAKER**



**Dr JS MLM**  
**DR JS Moroka**  
**Local Municipality**

**DR JS Moroka Local Municipality**  
**Headquarters Office**  
Physical: 2601/3 Bongimfuno Street, Siyabuswa  
Postal: Private Bag X4012, Siyabuswa, 0472  
Tel No: (013) 973 1101 /0821/ 2595  
Fax No: (013) 973 2463 /0973 /0974 /1270

**Water Services**  
Mhibane Tel: (013) 976 8107 /8108 /8109  
Matshiding Tel: (013) 985 8904

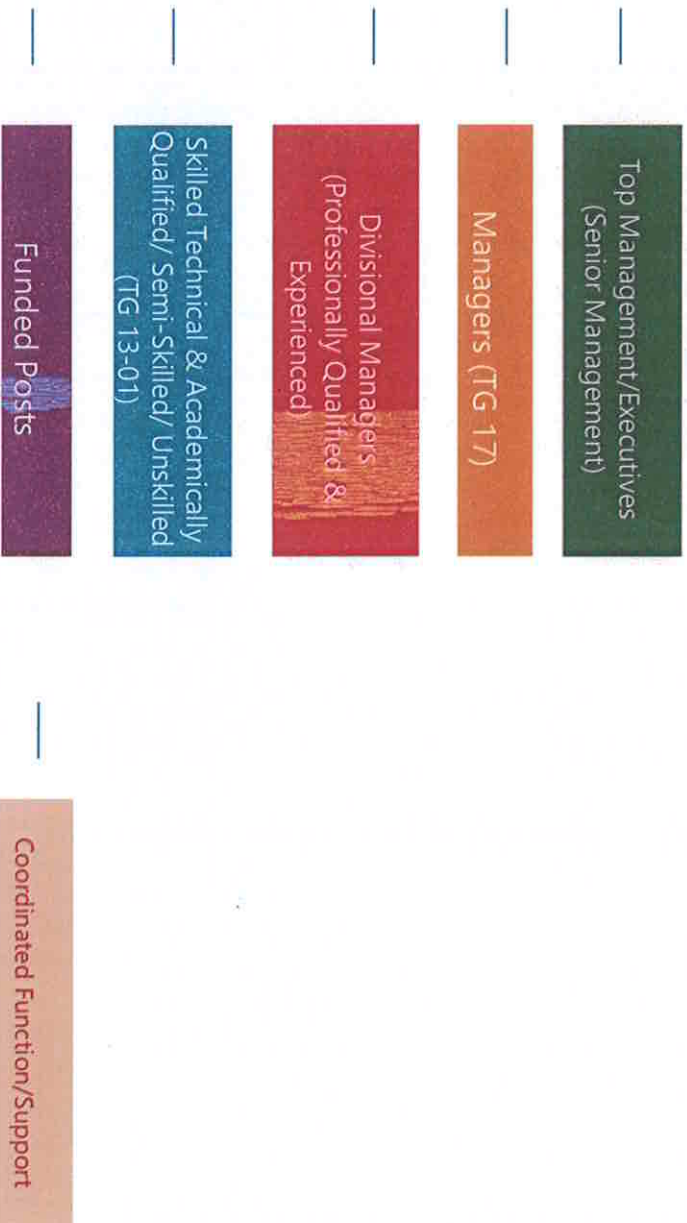
2024/25 Approved Organizational Structure

Signed by the Municipal Manager:

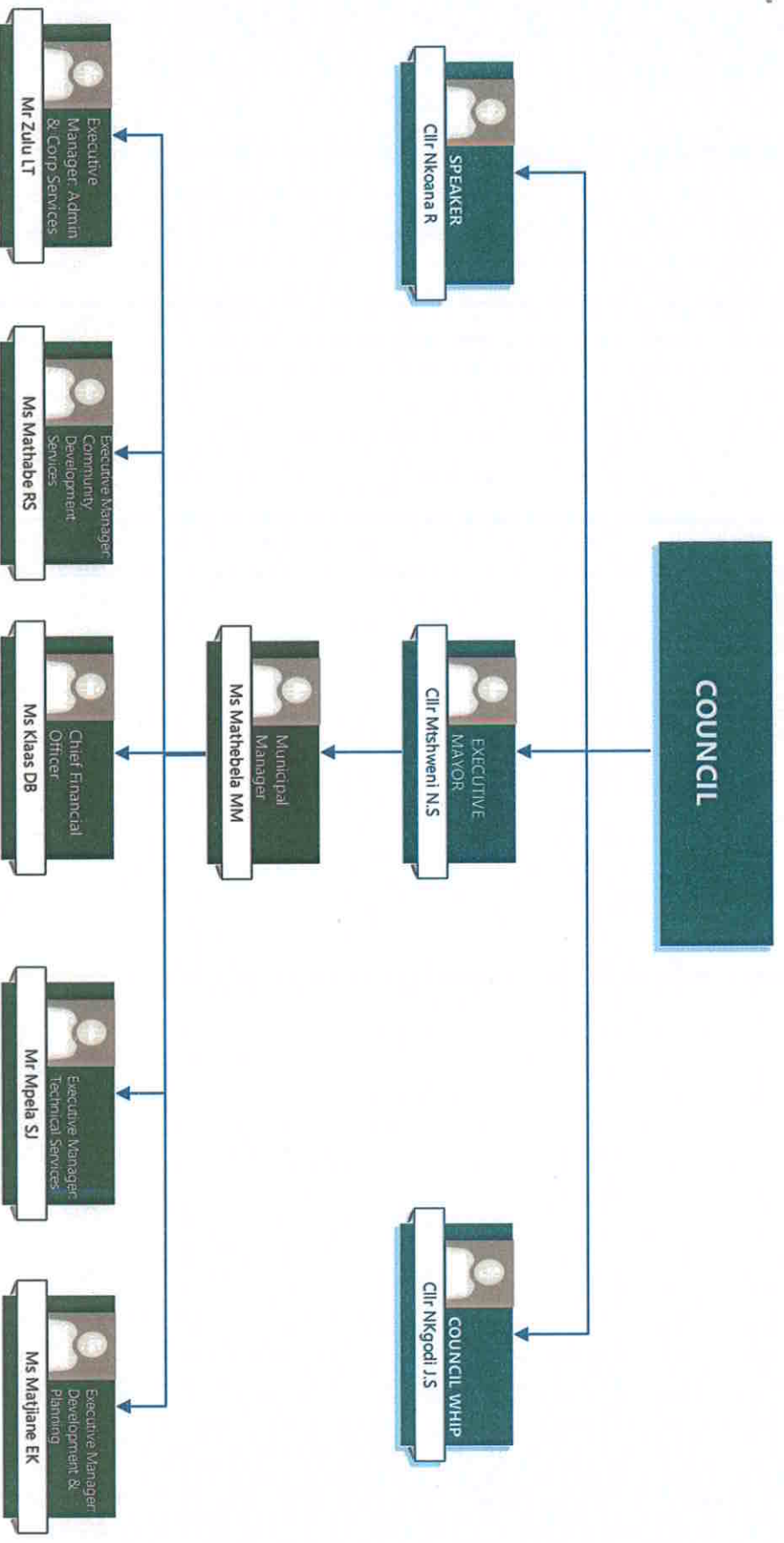
# Dr JS Moroka Local Municipality –Total Workforce

DEPARTMENT	FILLED POSTS	VACANT POSTS	TOTAL POSTS
Senior Management (MM & Sec 56)	6	0	6
Administration & Corporate Services	32	18	50
Office of the Municipal Manager	28	49	77
Community Development Services	140	114	254
Finance	58	23	81
Technical Services	210	173	383
Economic Development & Planning	21	18	39
<b>Total</b>	<b>495</b>	<b>395</b>	<b>890</b>

Key



*mm*

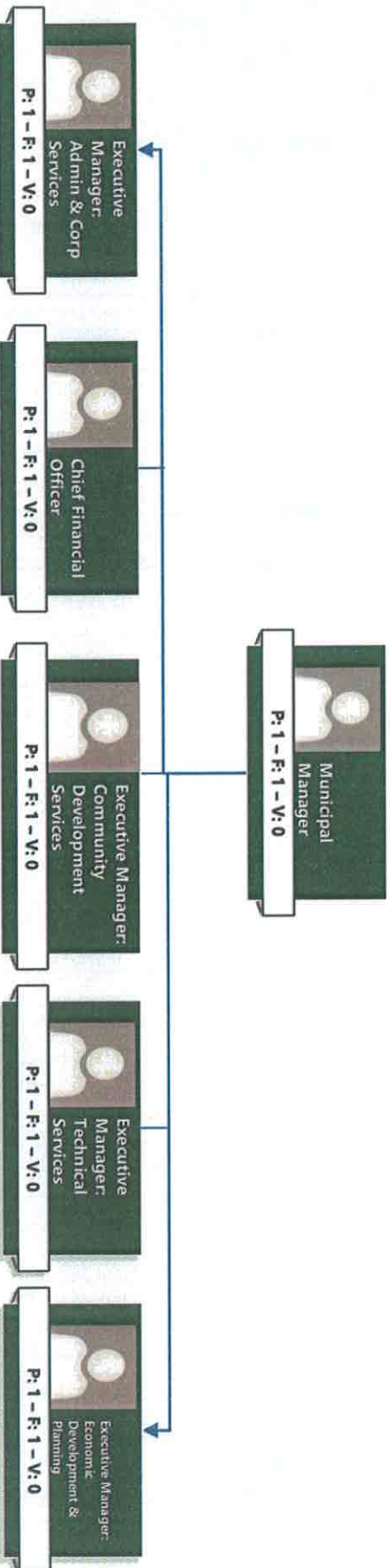


MWA



DR JS MLM

# Senior Management Structure



MLM

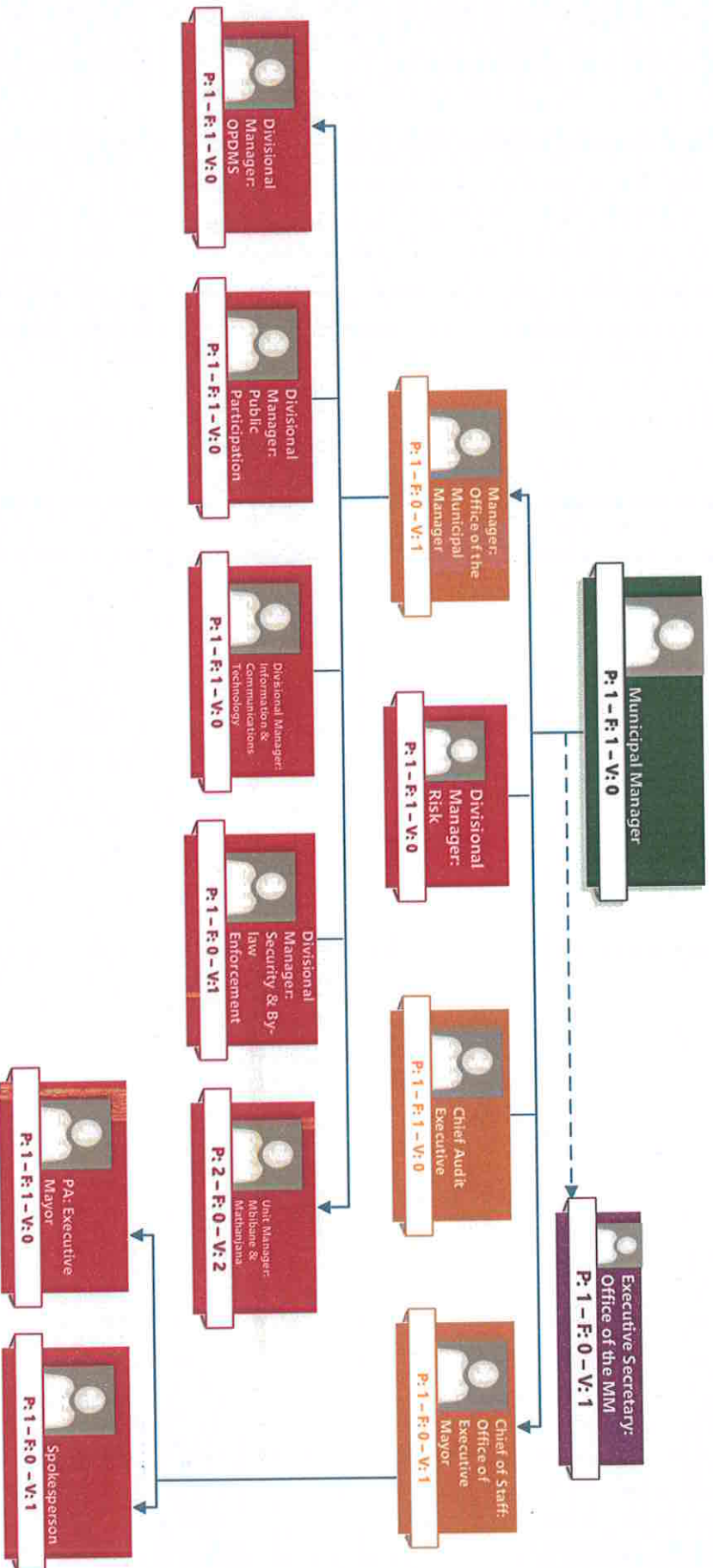
# OFFICE OF MUNICIPAL MANAGER

**Departmental Statistics:**

Filled Posts	Vacant Posts	Total Post
28	49	77



# Office of Municipal Manager: Top Structure



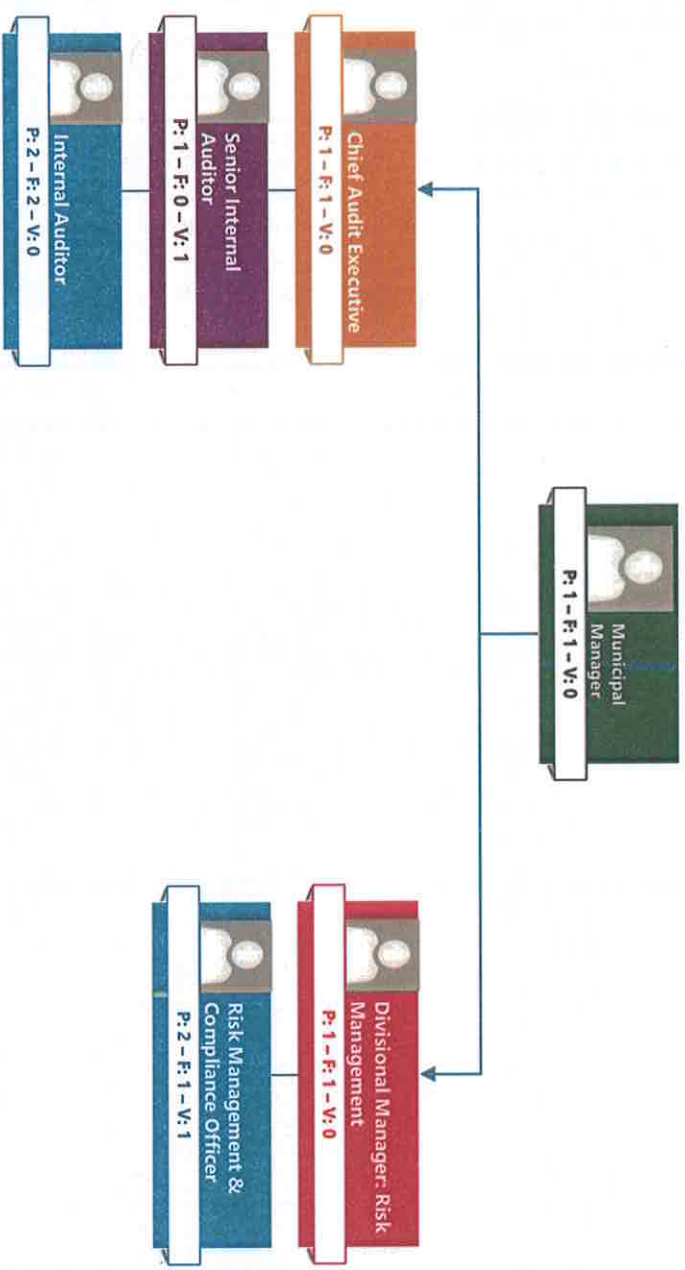
*Handwritten signature/initials*





DRJS MLM

# Office of Municipal Manager: Compliance

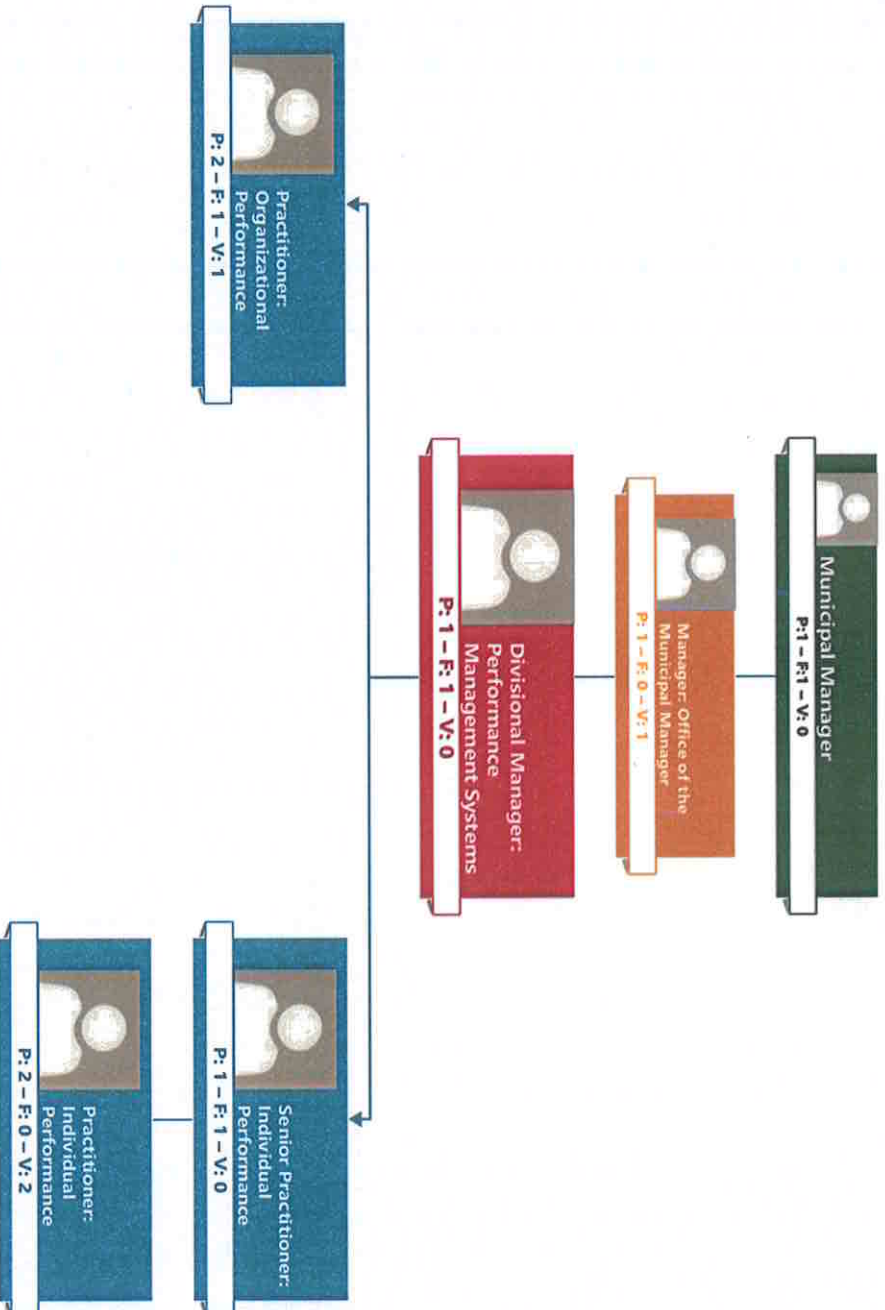


*Handwritten initials*



DR JS MLM

### Organizational & Individual Performance Management & Development System

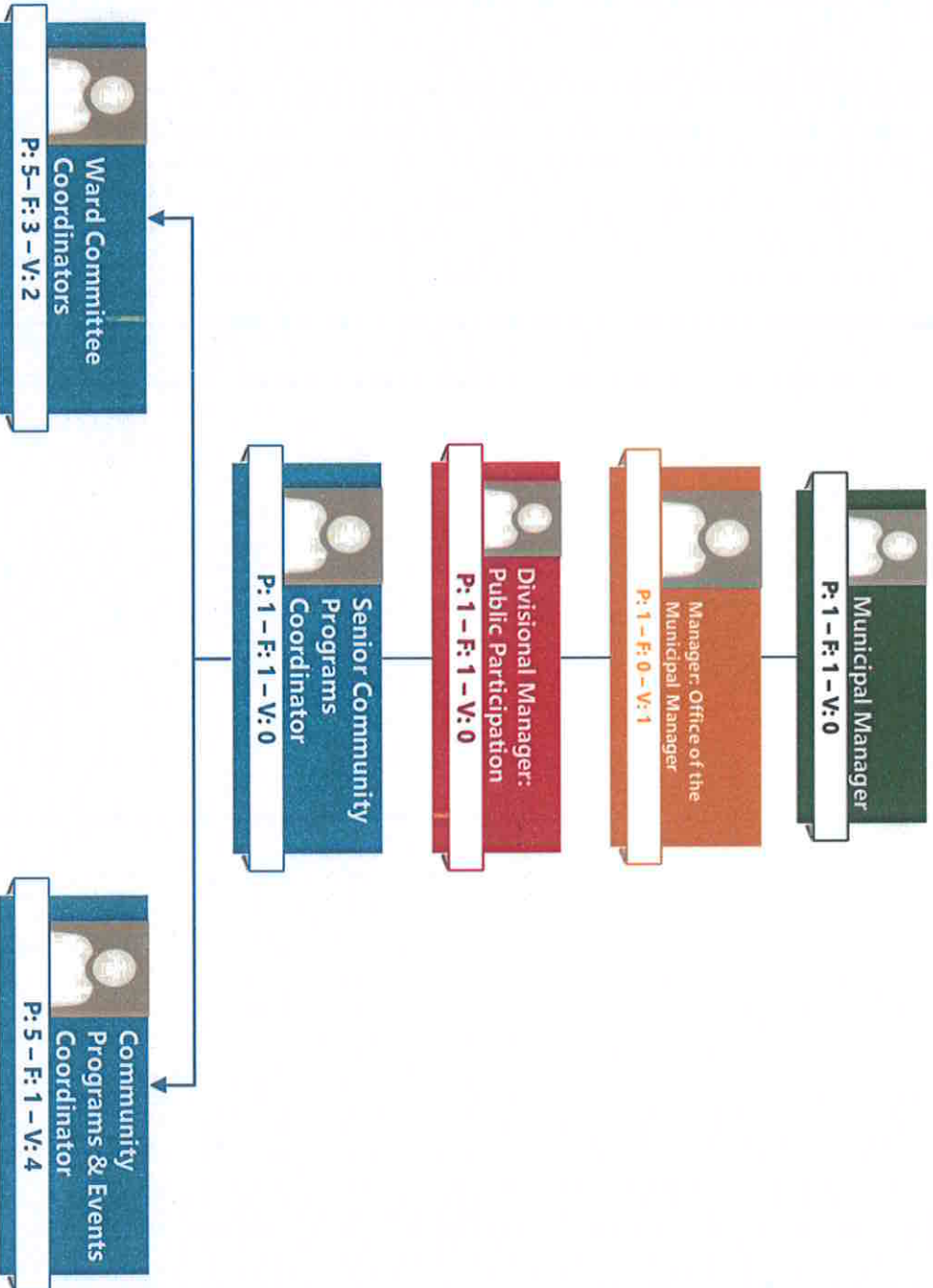


*Handwritten signature*



DRJS MLM

## Office of the Municipal Manager: Office of the Speaker

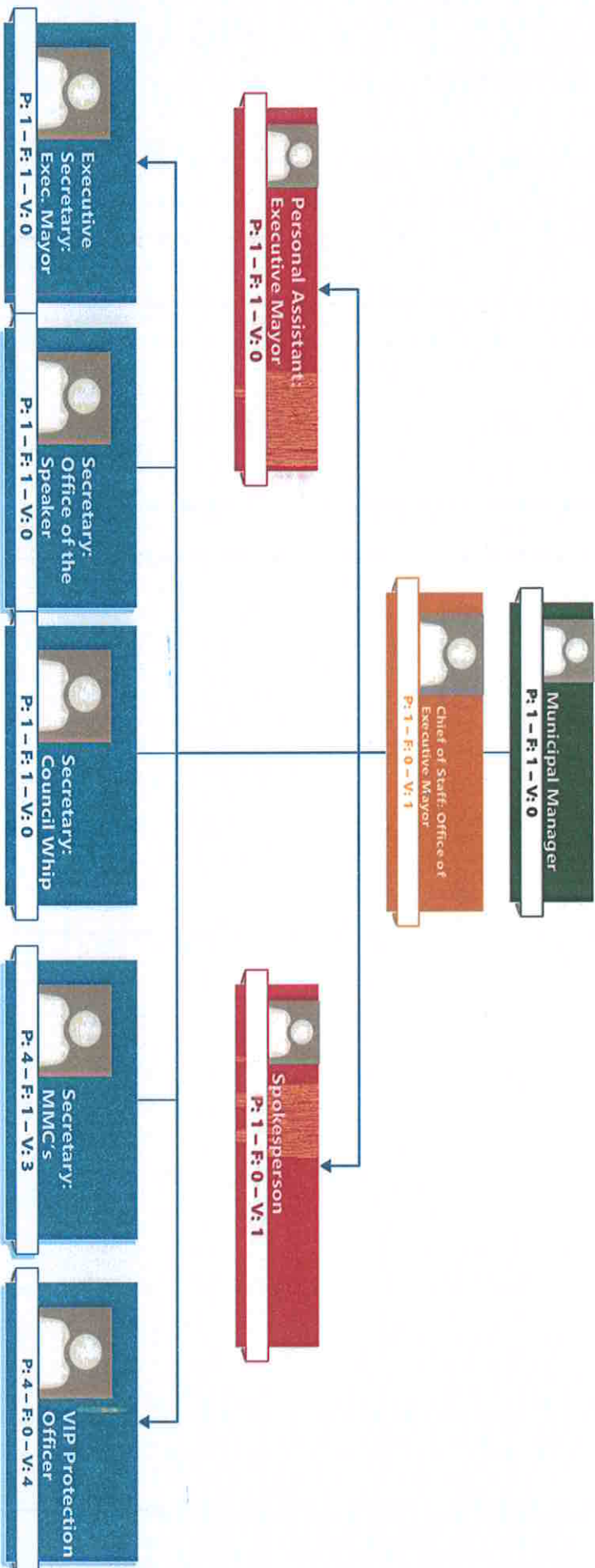


*Handwritten signature*



DR JS MLM

### Administration Support: Political Office Bearers

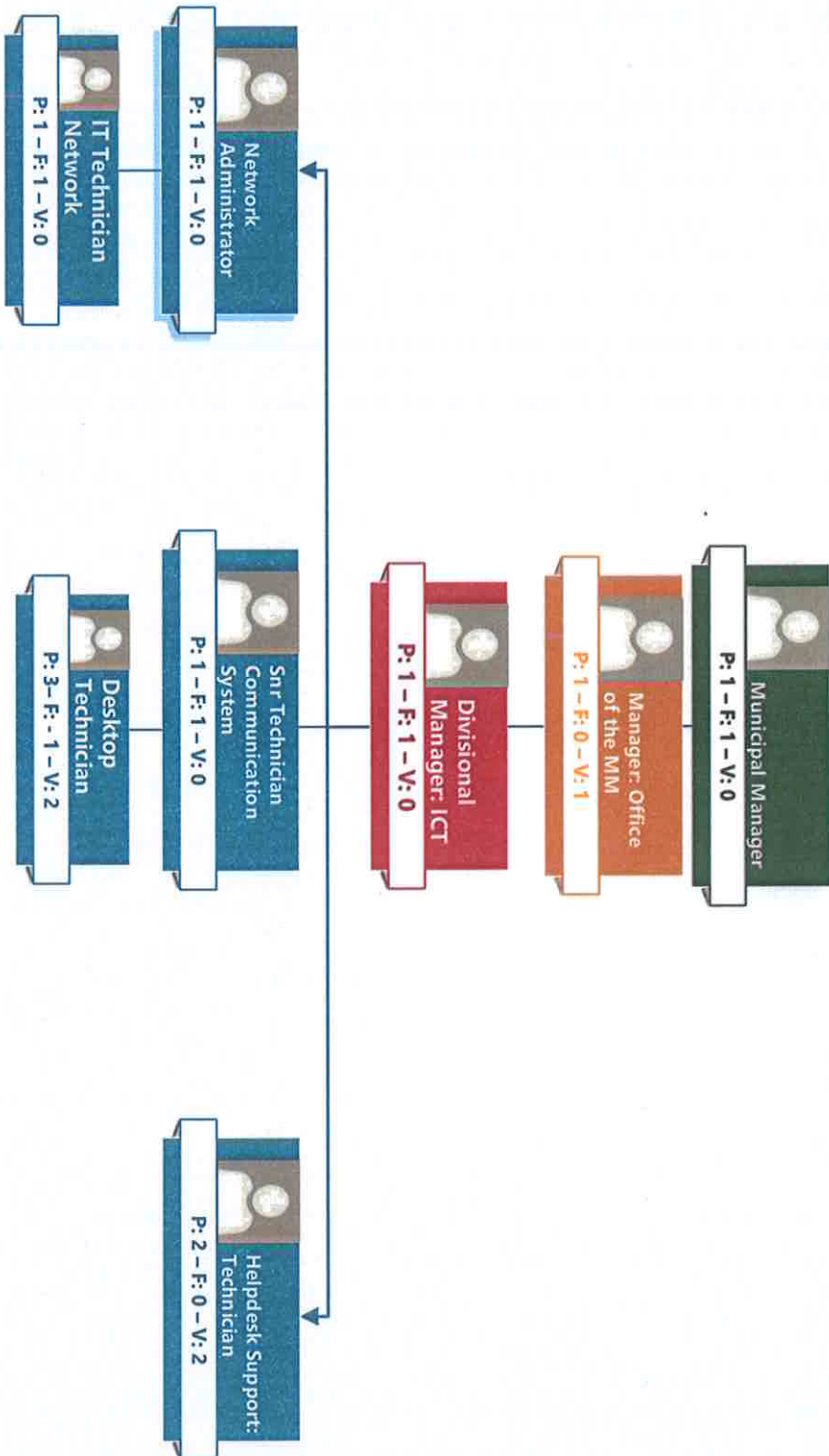


DR JS



DR JS MLM

# Information & Communication Technology

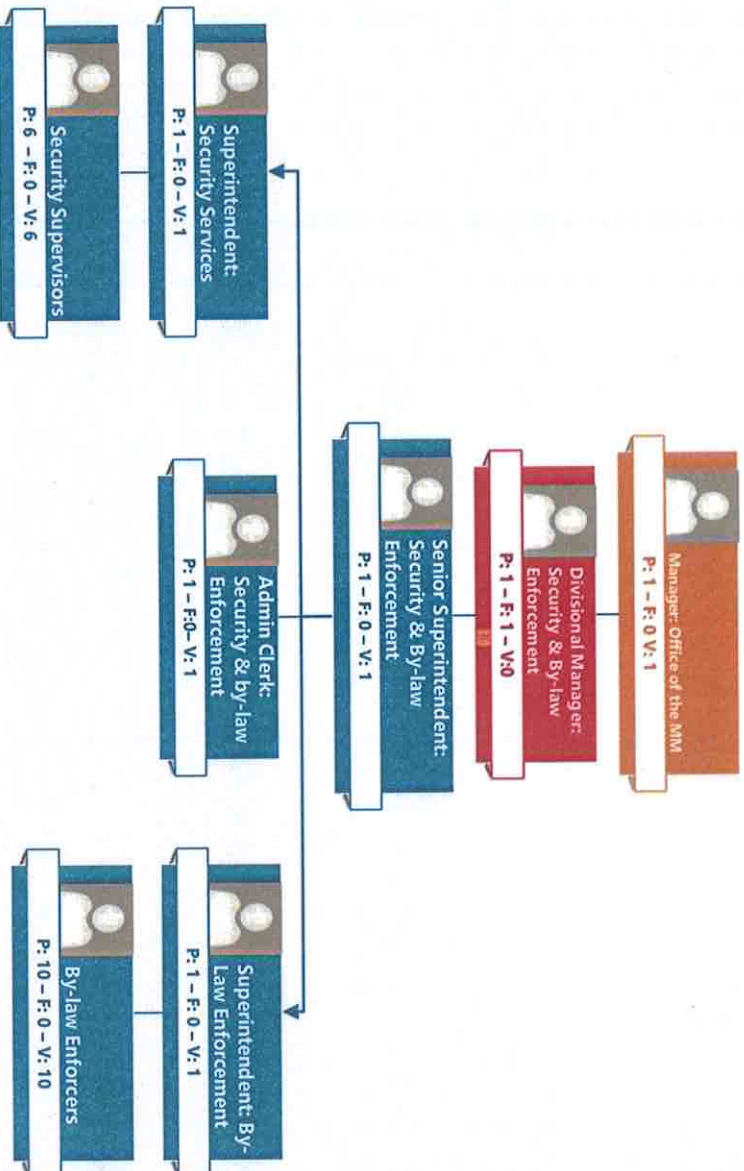


*MLM*



DRJS MLM

## Office of the Municipal Manager: Security & By-law enforcement

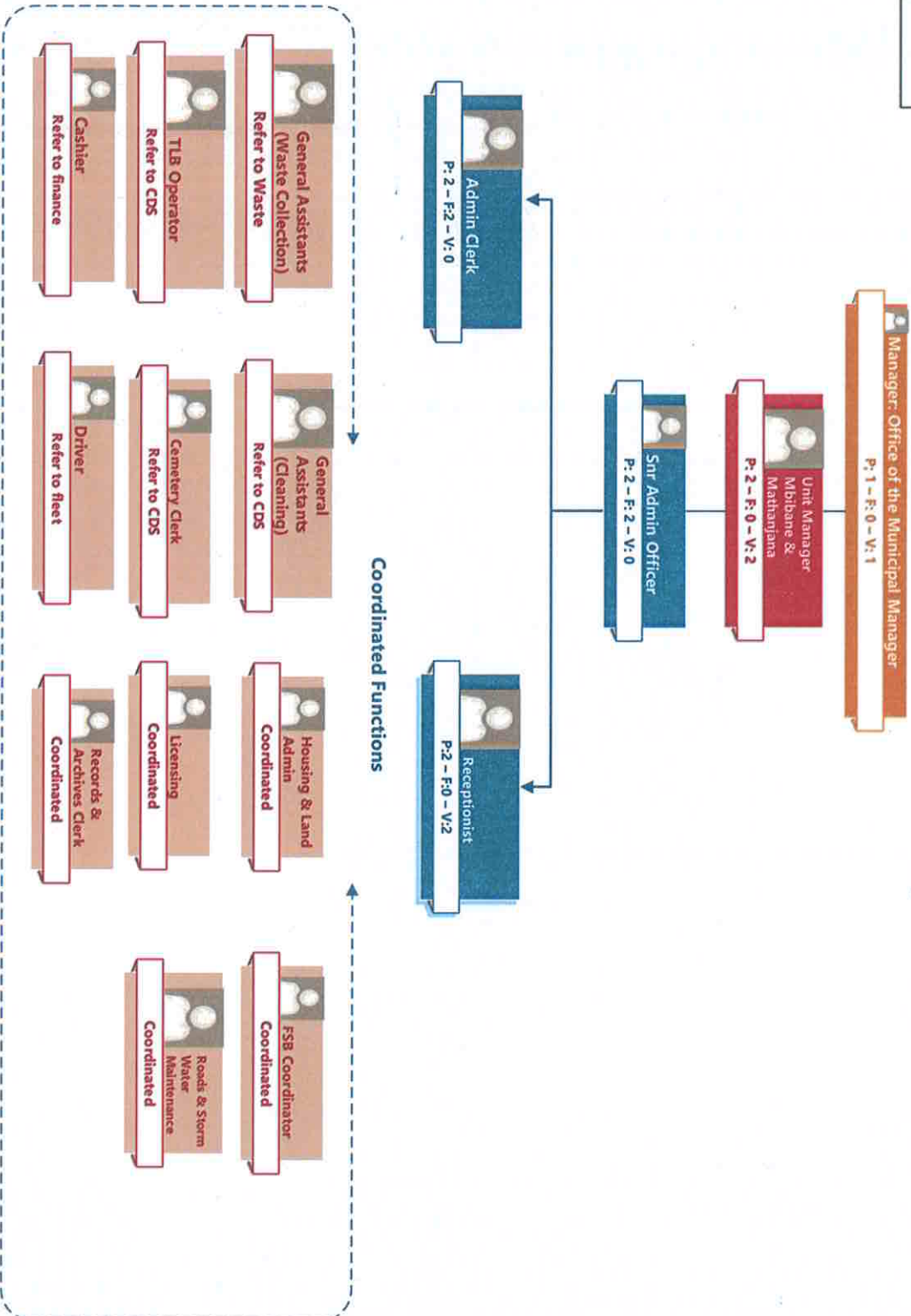


*MM*



DR JS MLM

### Satellite Offices : Mbibane and Matharjana Units



*Handwritten signature*

# ADMINISTRATION & CORPORATE SERVICES

**Departmental Statistics:**

Filled Posts	Vacant Posts	Total Posts
32	18	50

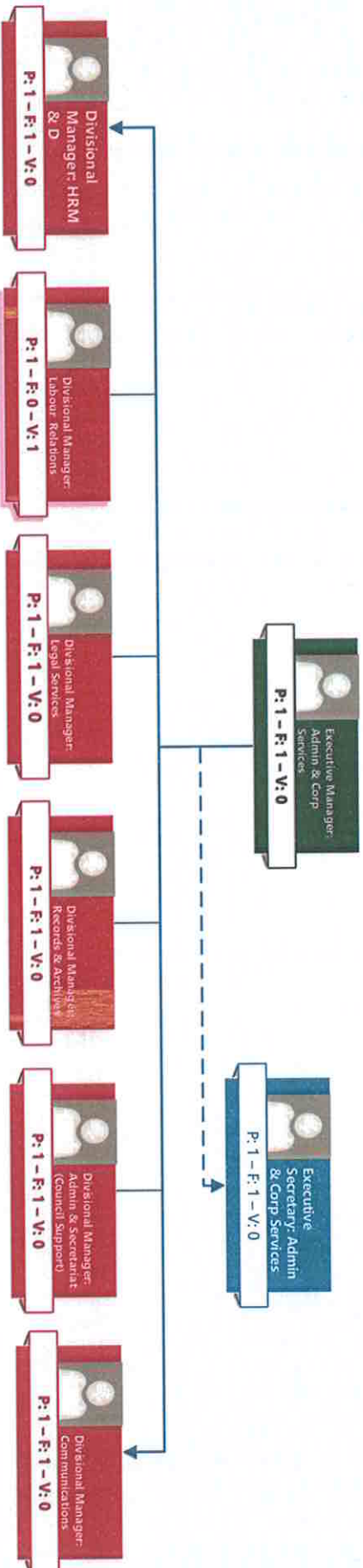
*W. M. M.*





DRJS MLIM

# Admin & Corp Services: Top Structure

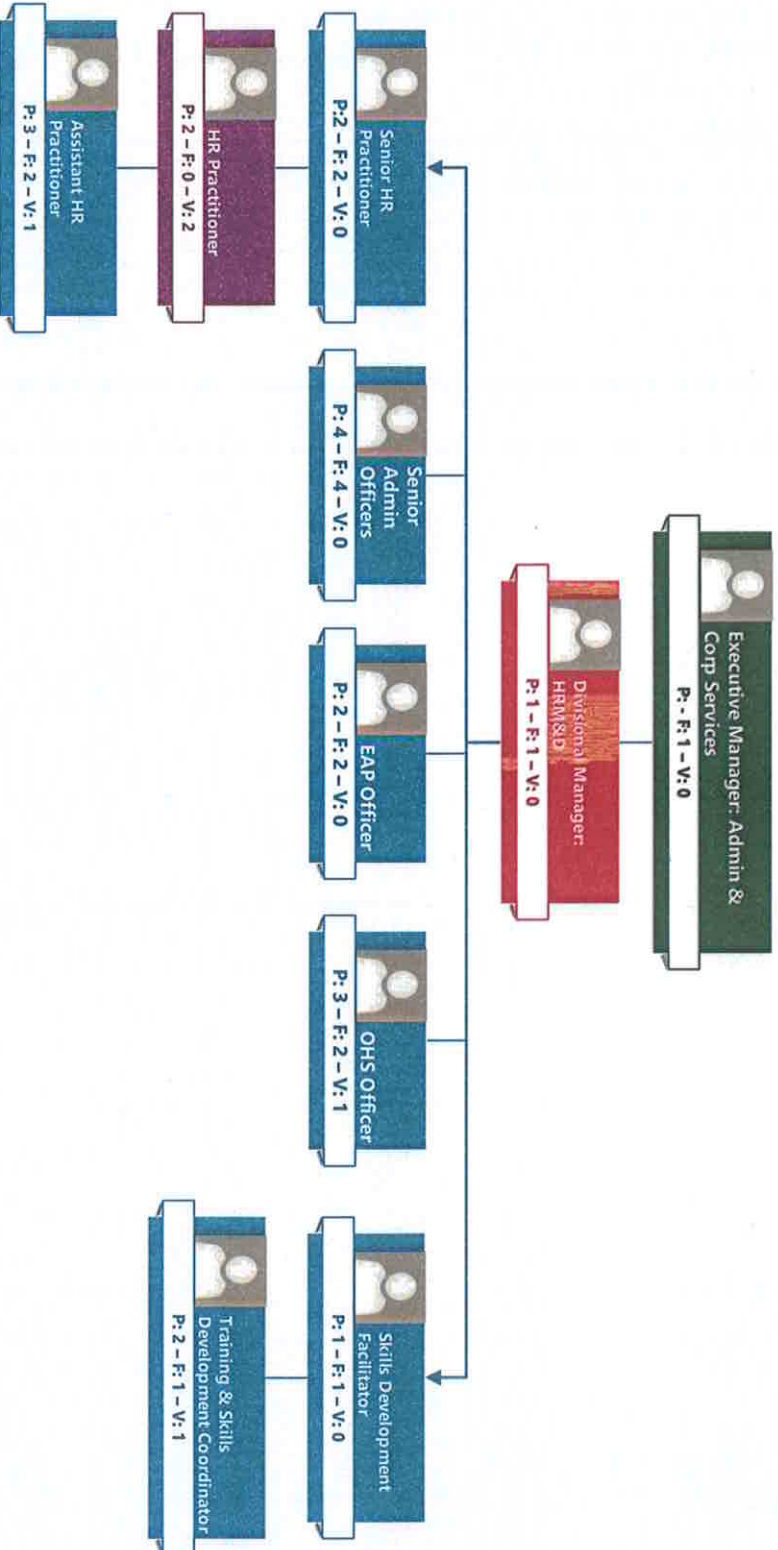


*MLM*



DR JS MLM

### Admin & Corporate Services: Human Resource Management & Development

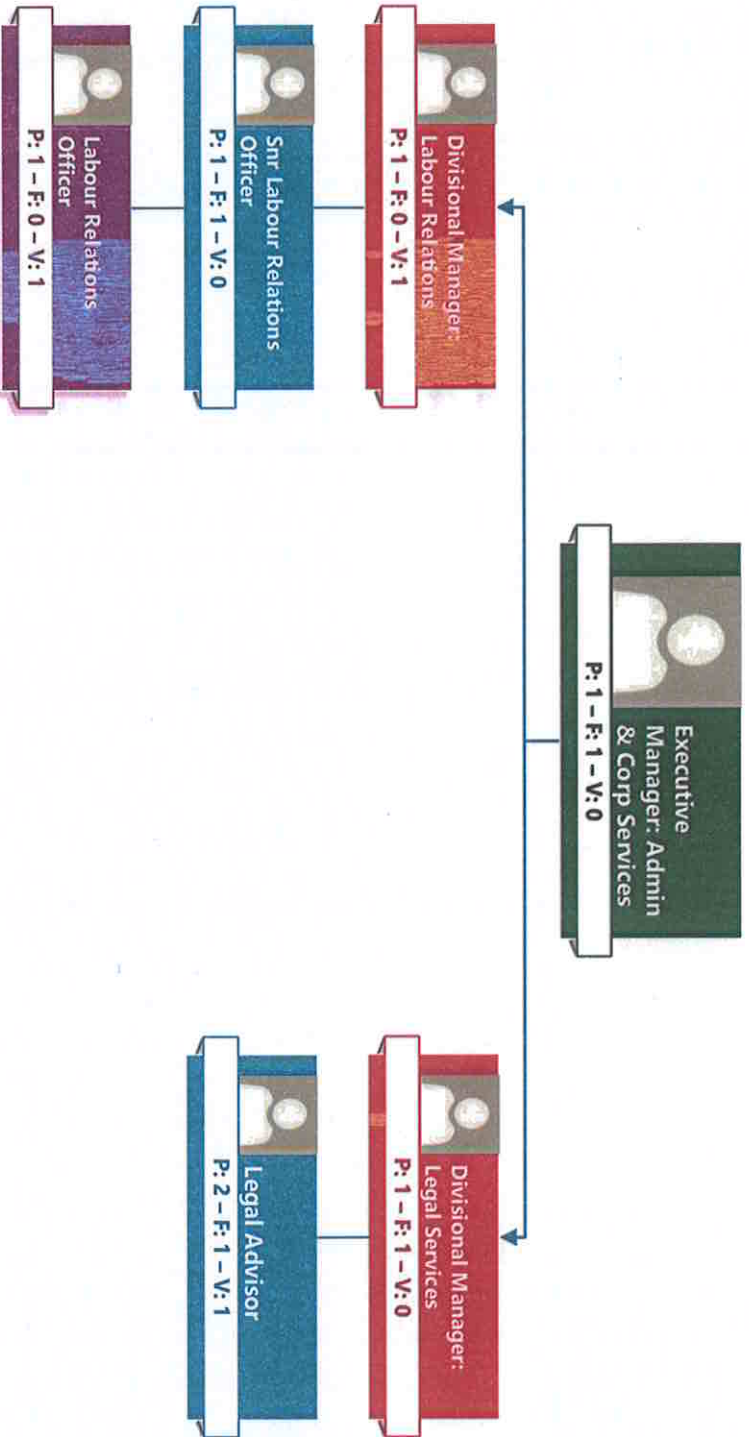


*MLM*



DR JS MLM

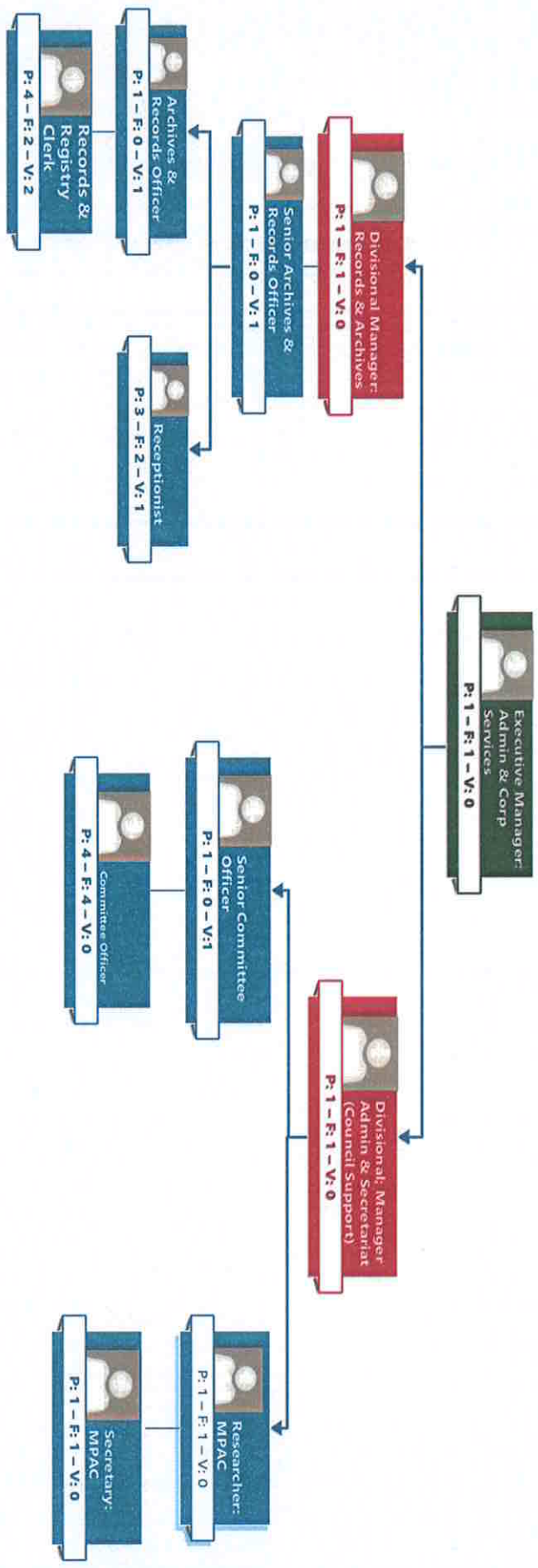
### Admin & Corporate Services: Legal Services & Labour Relations



*MLM*



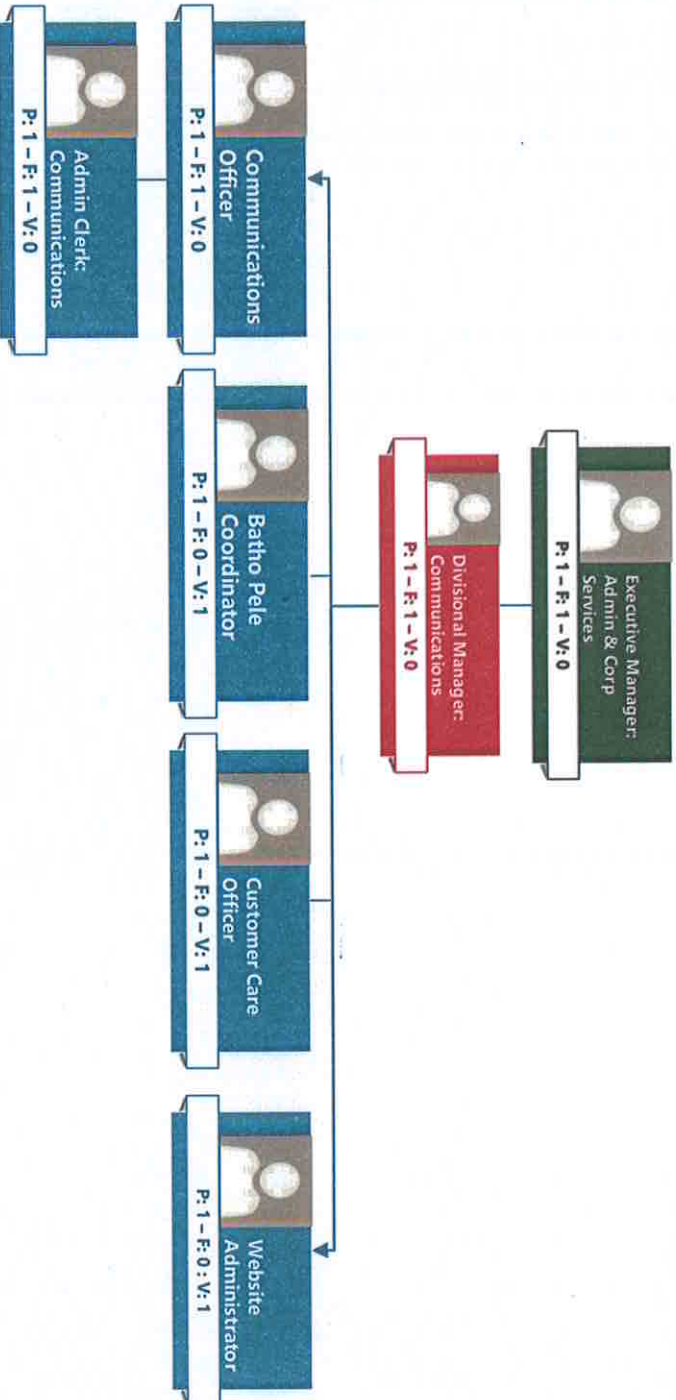
### Admin & Corporate Services: Admin & Support



*Handwritten signature*



# Communications Unit



*MLM*

# FINNANCE

**Departmental Statistics:**

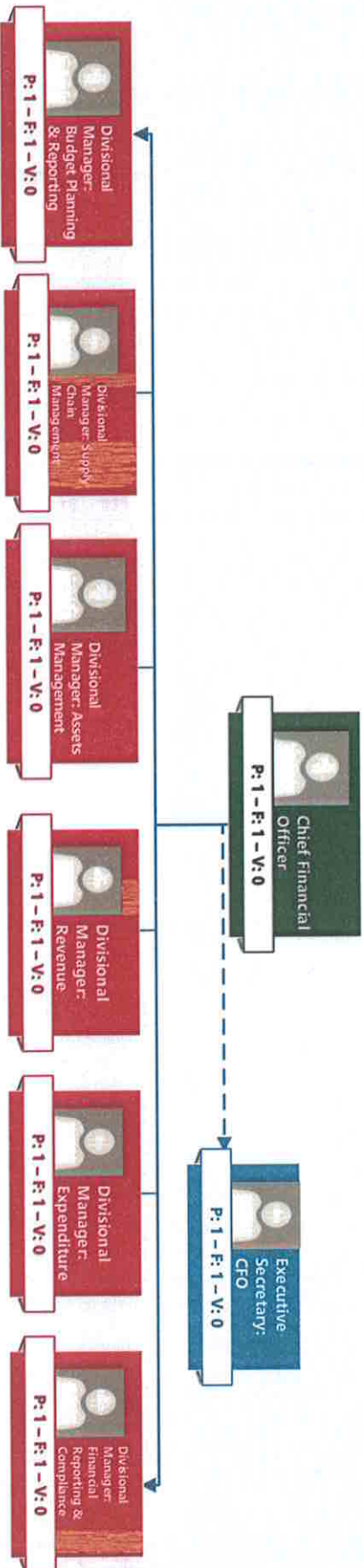
<b>Filled Posts</b>	<b>Vacant Posts</b>	<b>Total Posts</b>
58	23	81

*mm*



DR JS MLM

### Finance: Top Structure



*Verma*



DR JS MLM

## Finance: Financial Reporting & Compliance



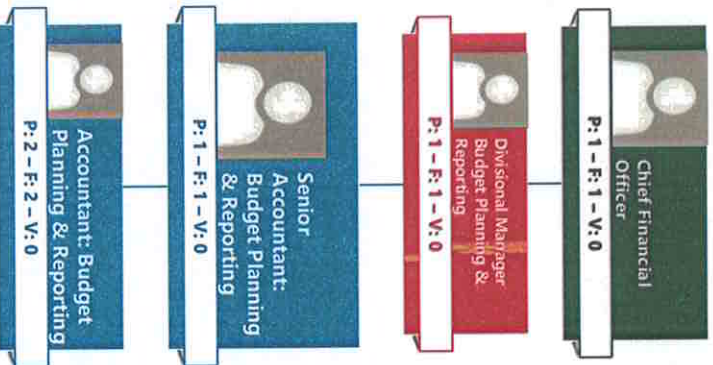
*MLM*





DR JS MLM

## Finance: Compliance: Budget Planning & Reporting

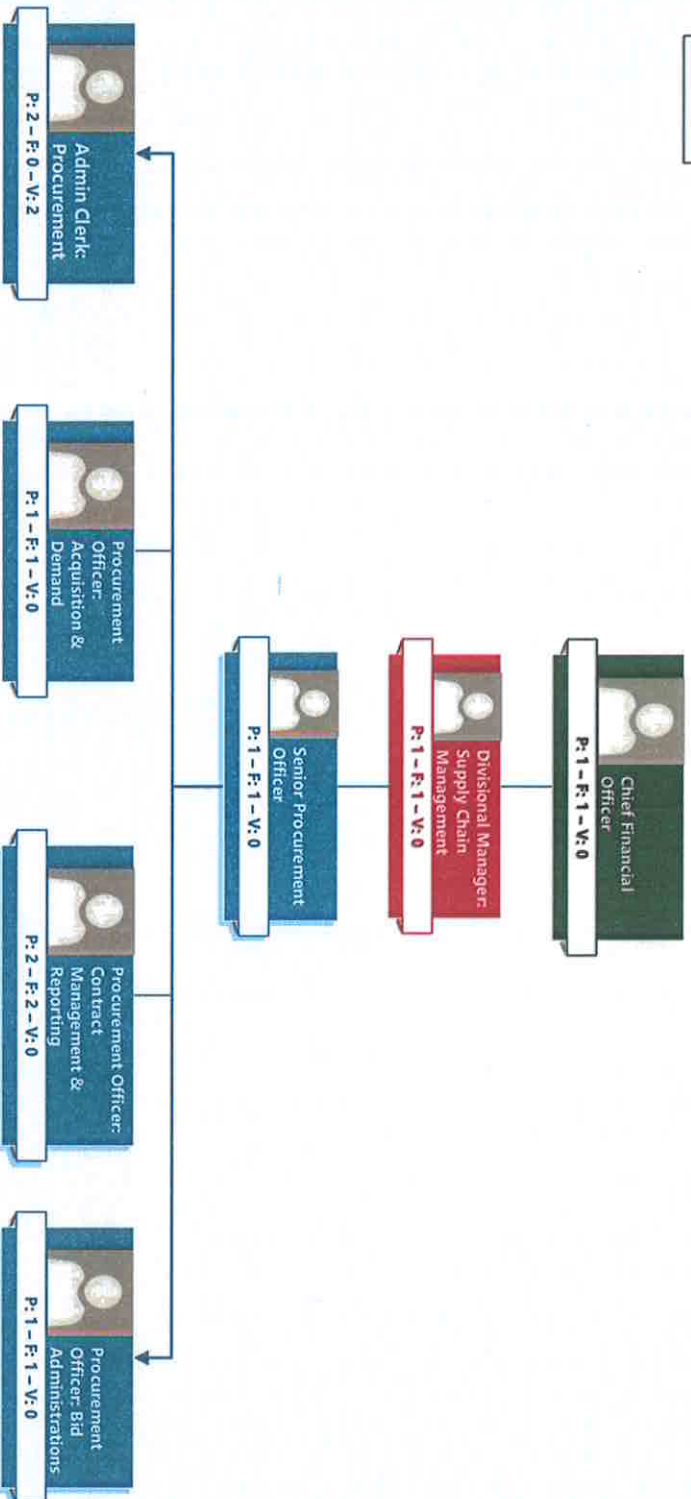


*MLM*



DR JS MLM

### Finance - Compliance: Supply Chain Management

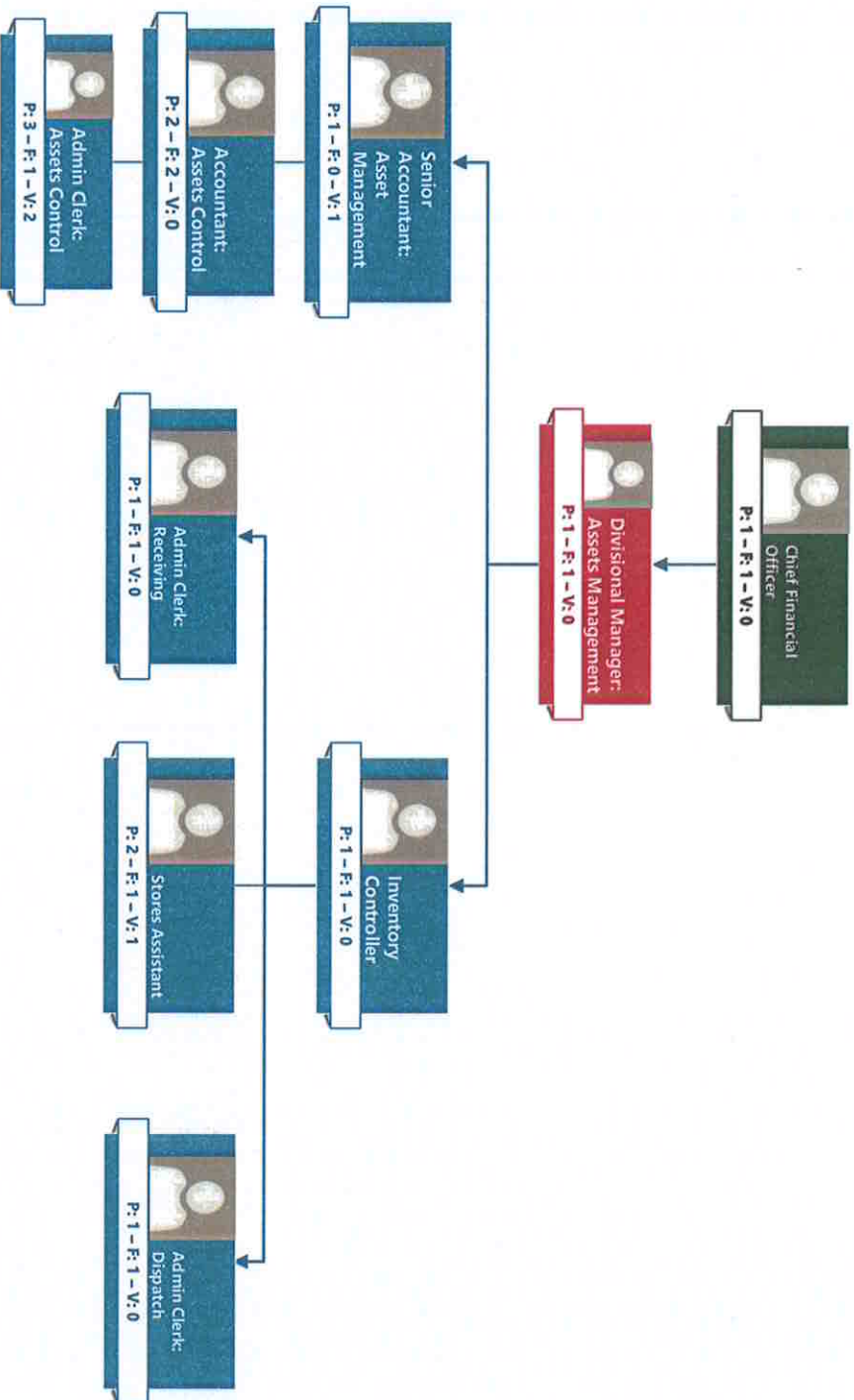


*MLM*



DR JS MLM

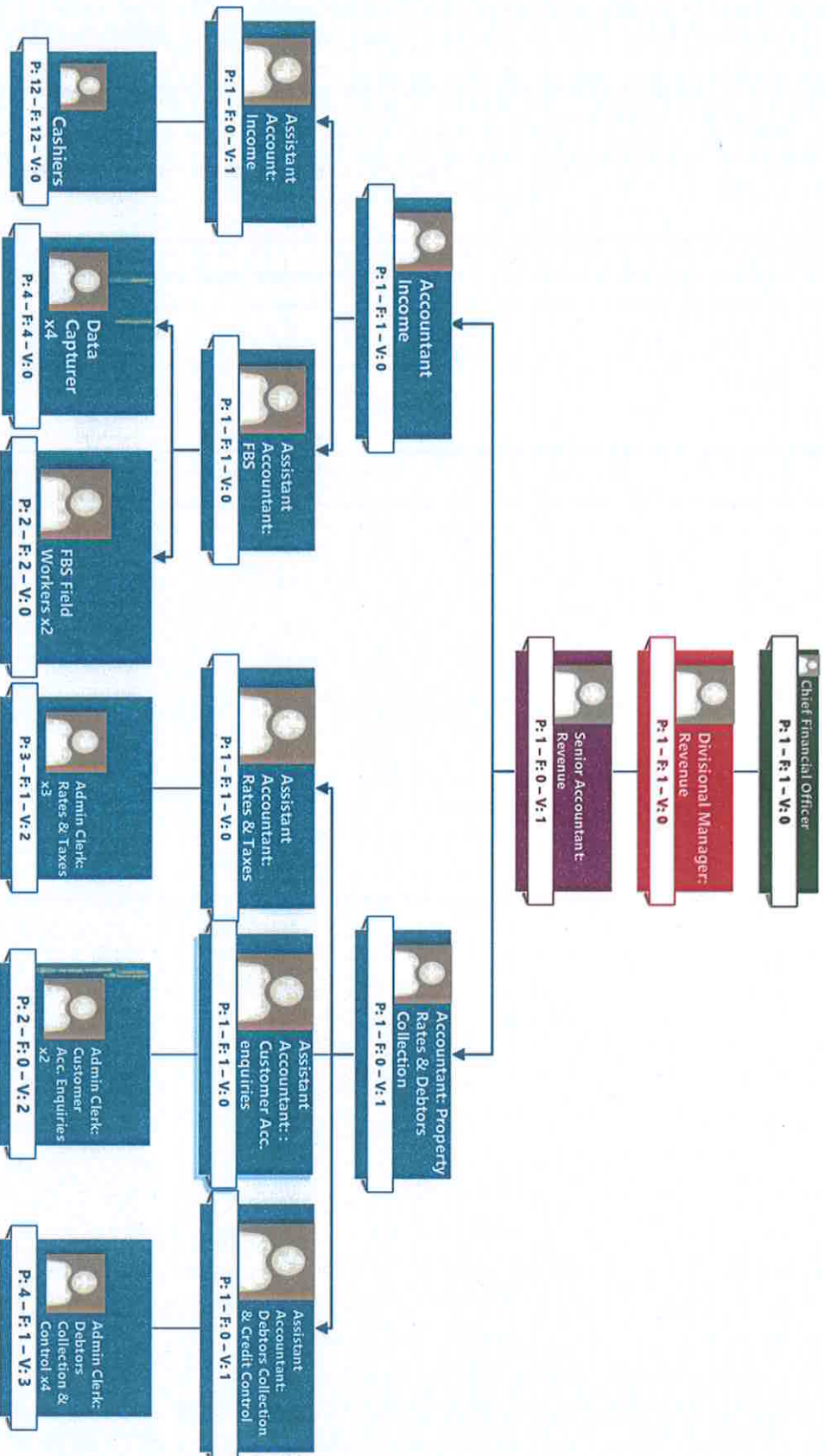
### Finance: Assets Management





DR JS MLM

### Finance: Revenue

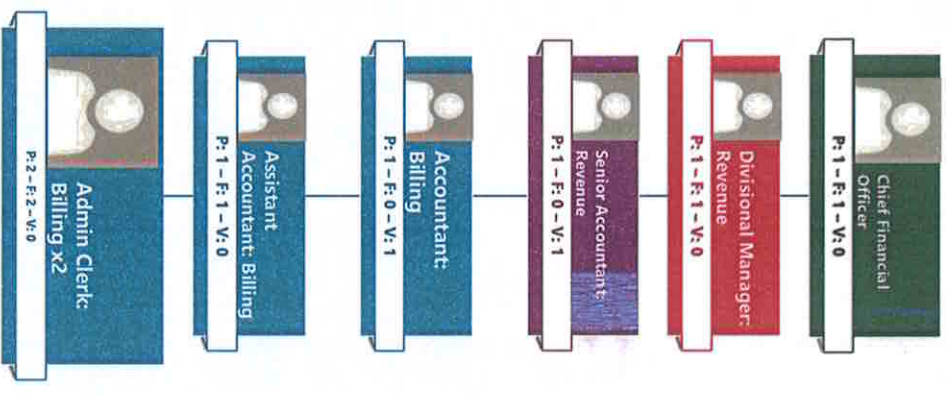


*MLM*



DR JS MLM

**Finance: Revenue Continuation.....**

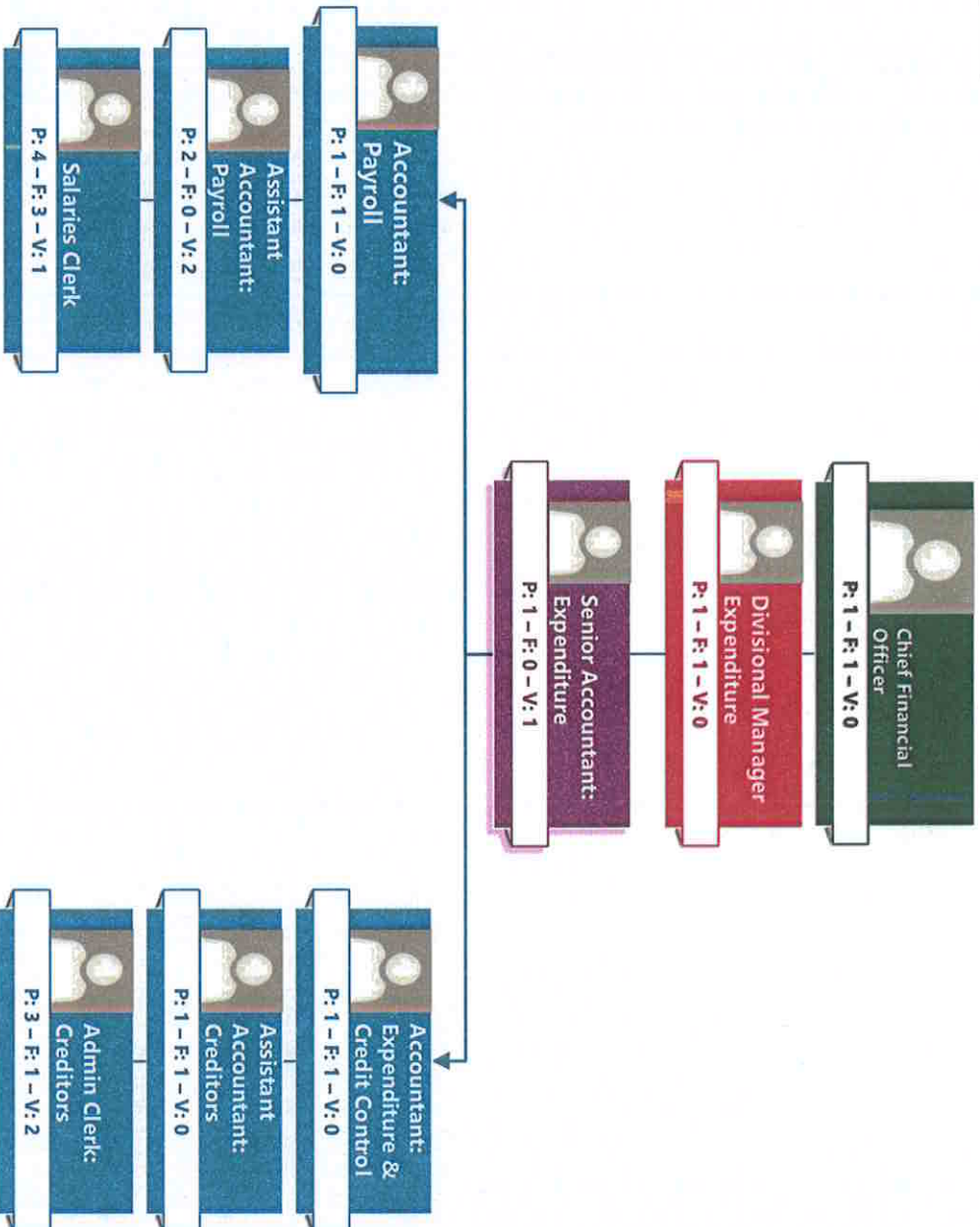


*MLM*



DR JS MLM

## Finance: Financial Accounting-Expenditure



MLM

# TECHNICAL SERVICES

## Departmental Statistics:

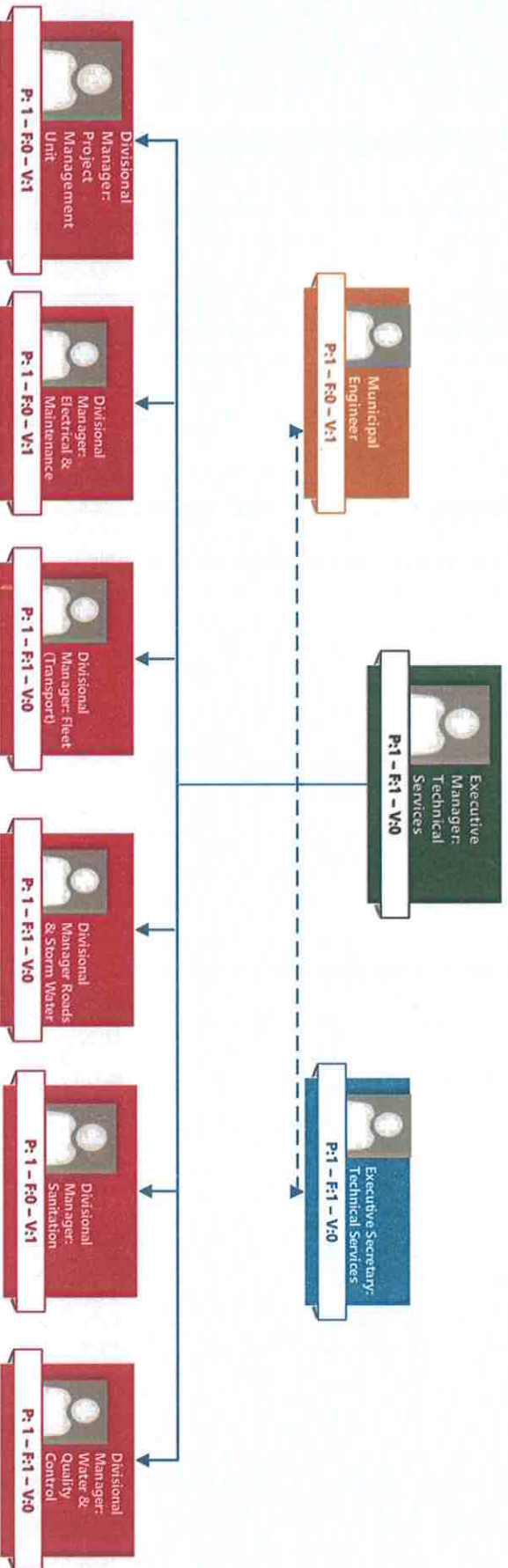
Filled Posts	Vacant Posts	Total Posts
210	173	383

*mm*



DR JS MLM

### Technical Services: Top Structure

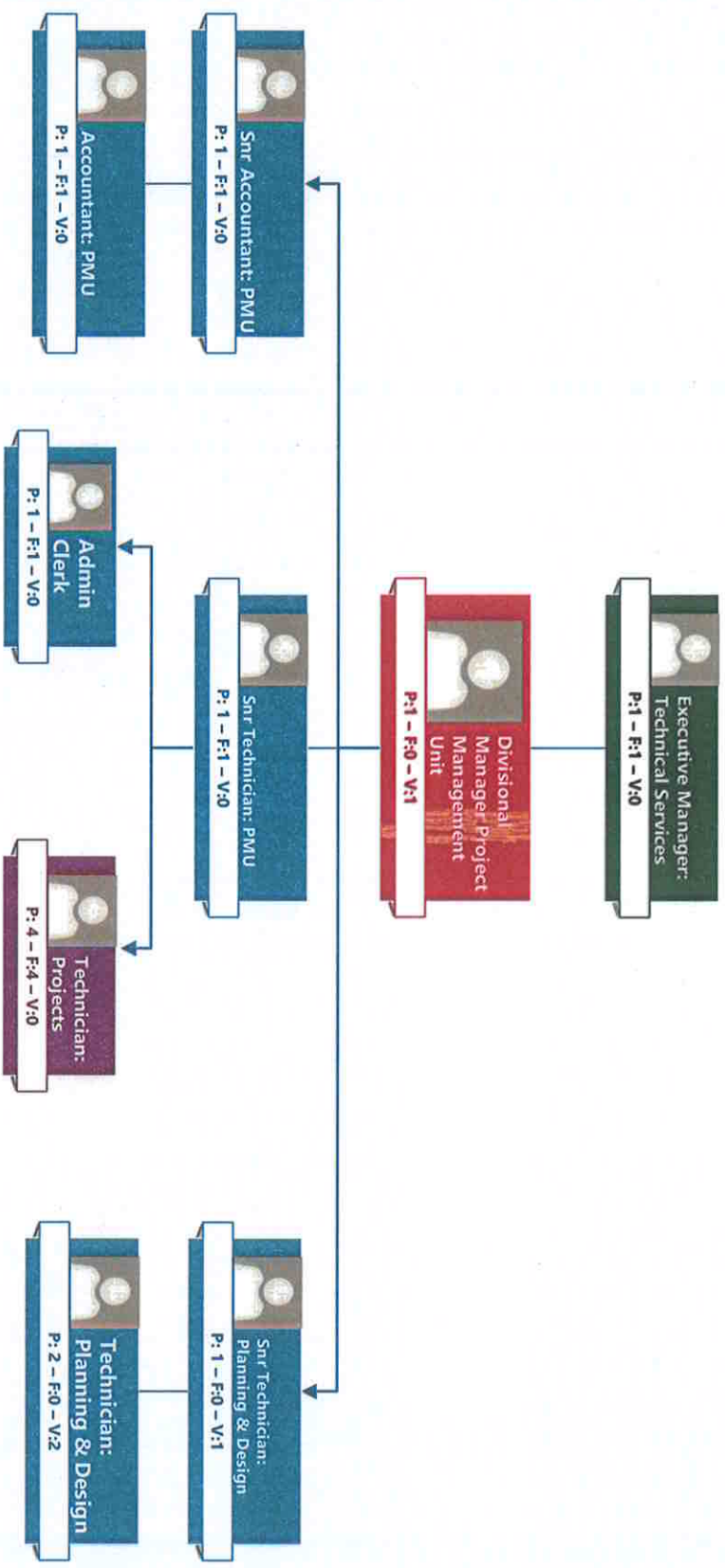






DR JS MLM

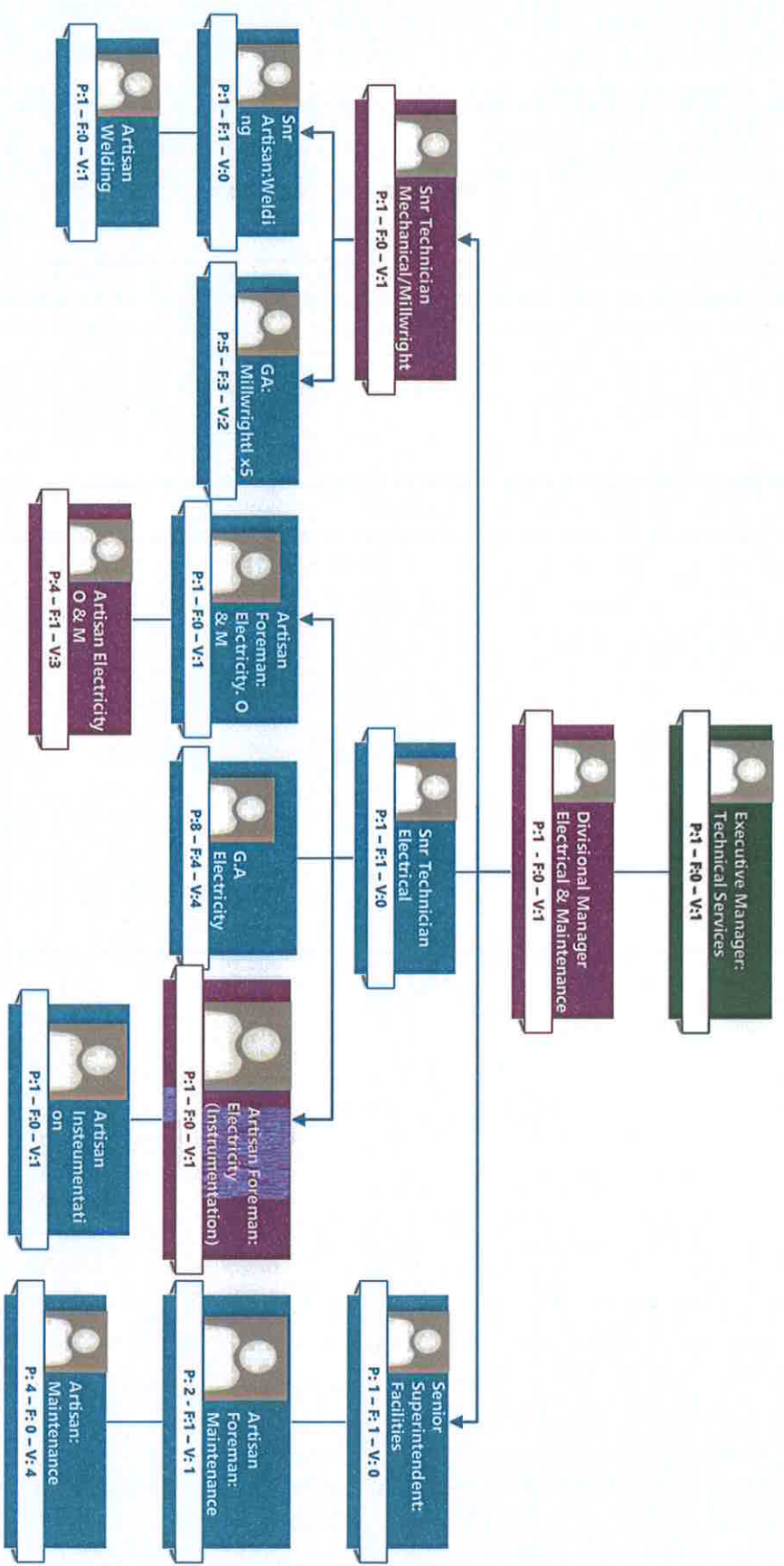
### Technical Services: Project Management Unit & Planning



*Handwritten signature*



### Technical Services : Electrical

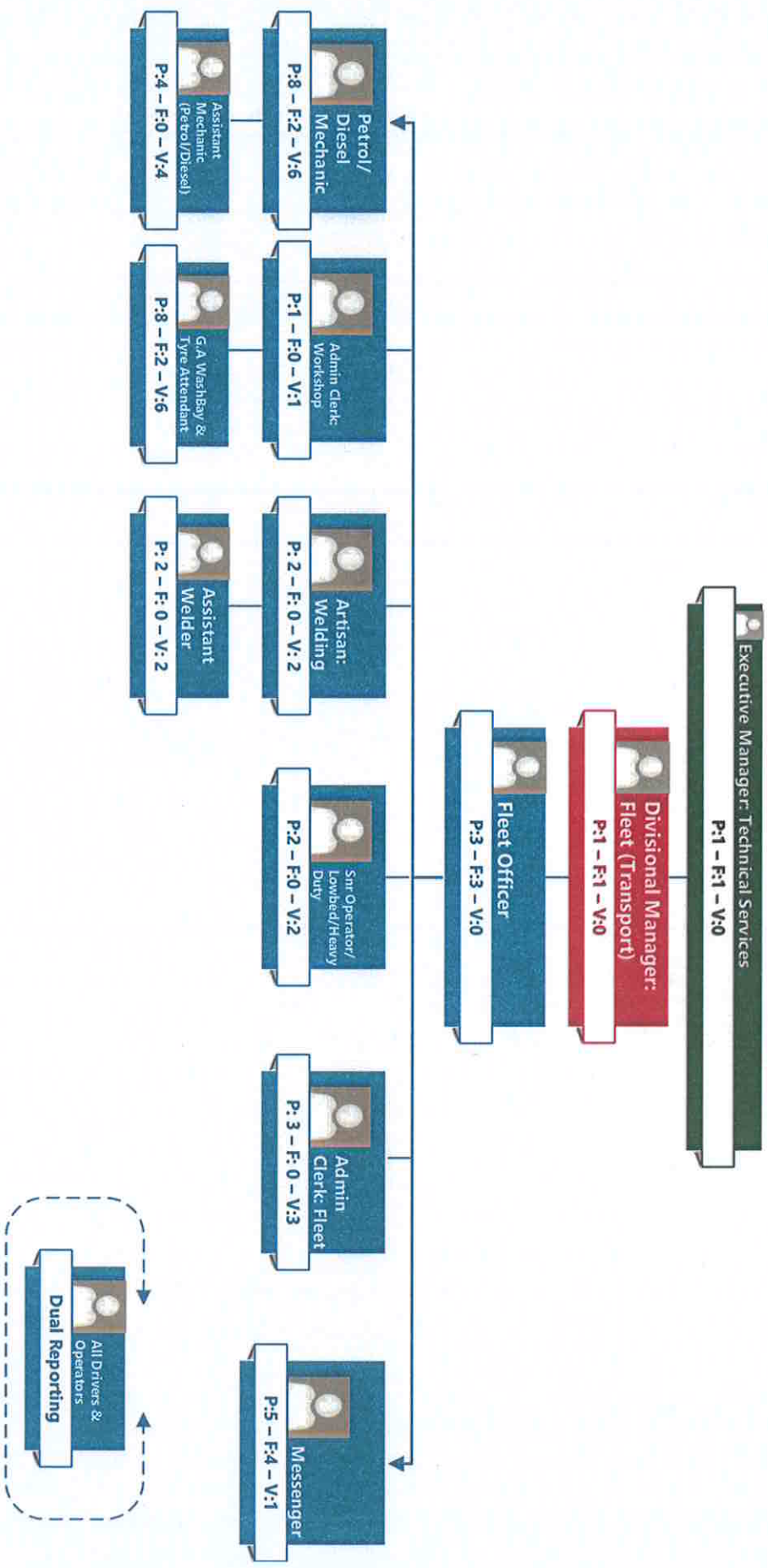


*MLM*



DR JS MLM

# Technical Services: Fleet Management

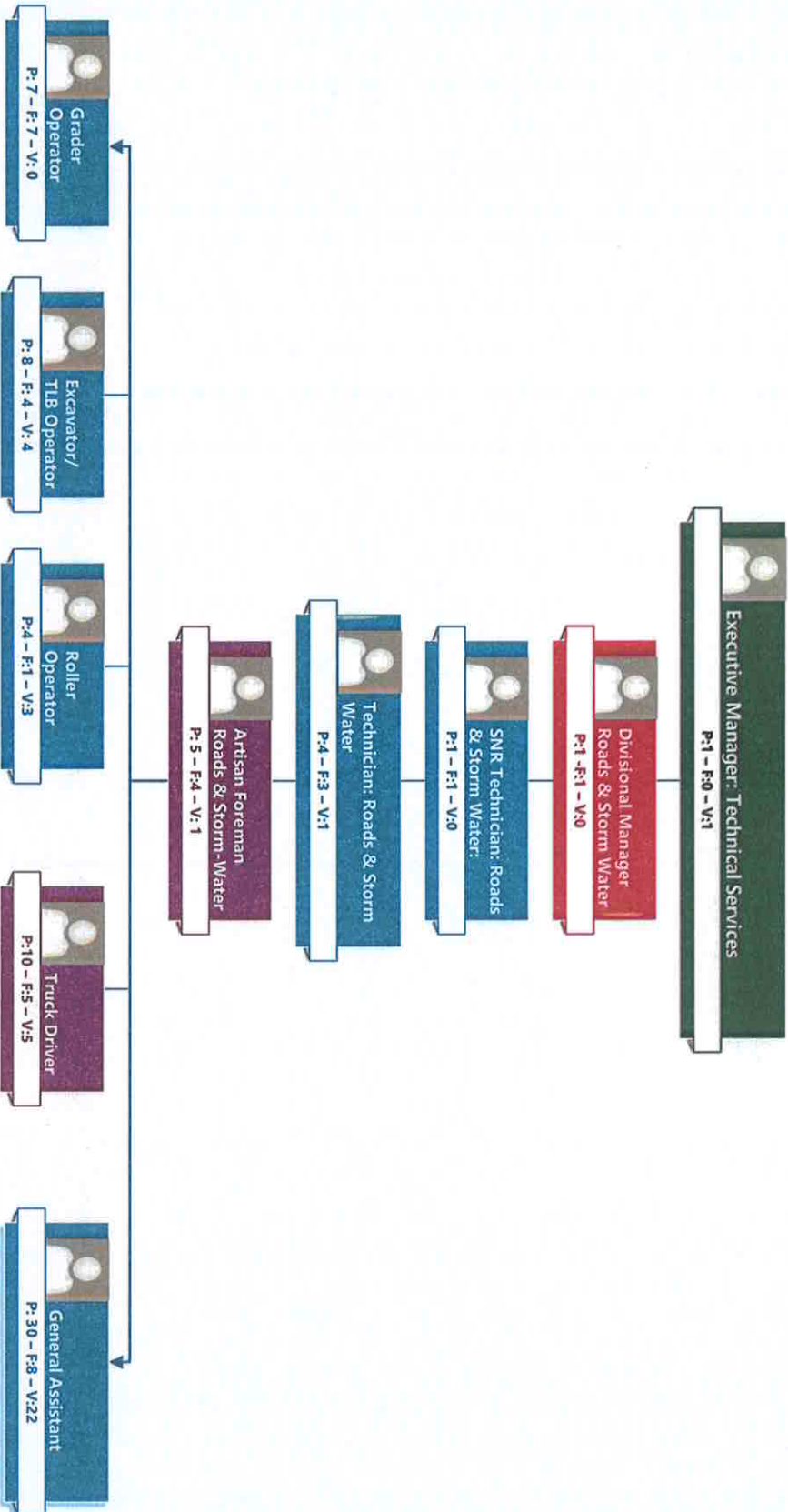


MLM



DR JS MLM

### Technical Services – Roads & Storm Water Maintenance

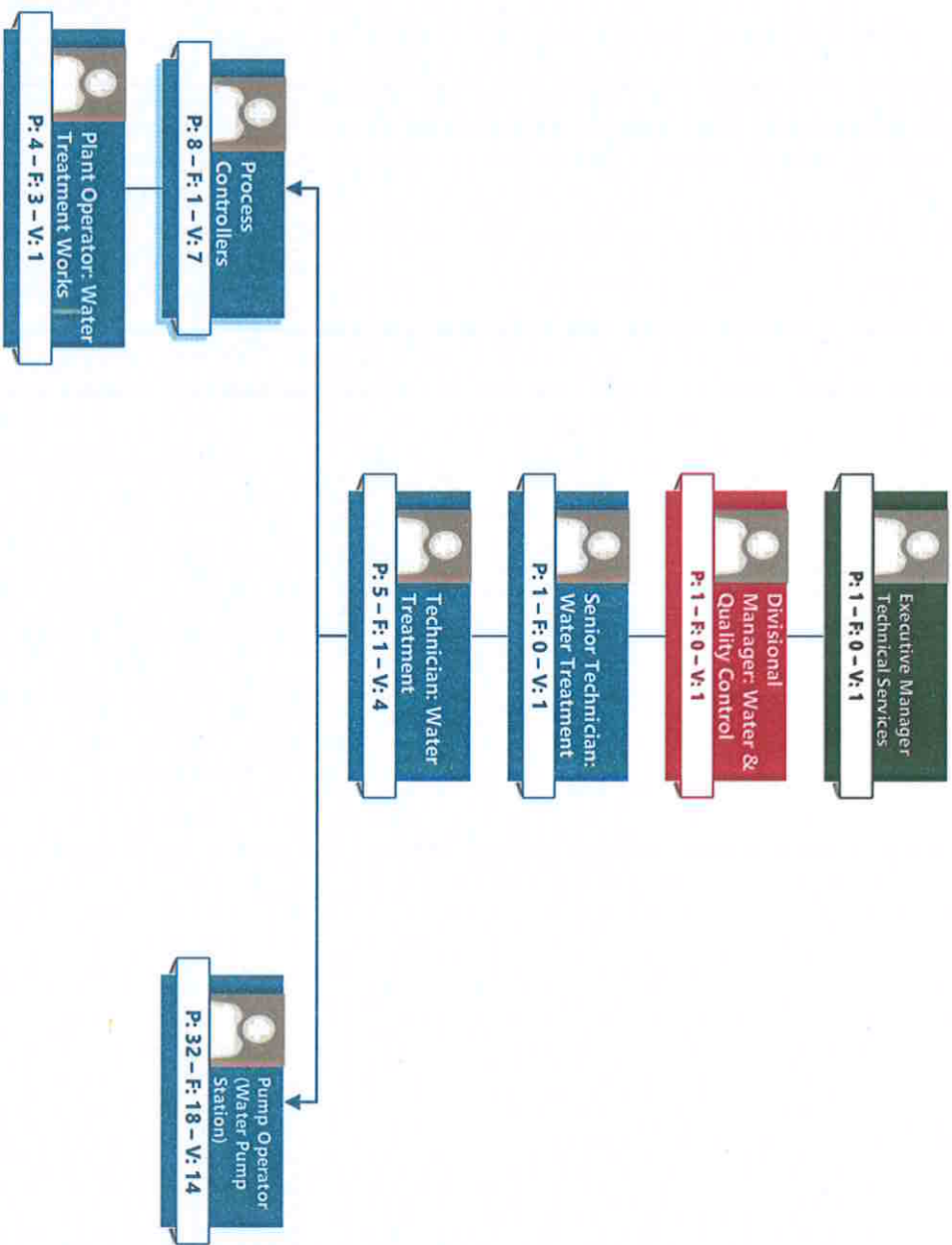


MLM



DRJS MLM

### Technical Services: Water Services (Water Treatment Works)

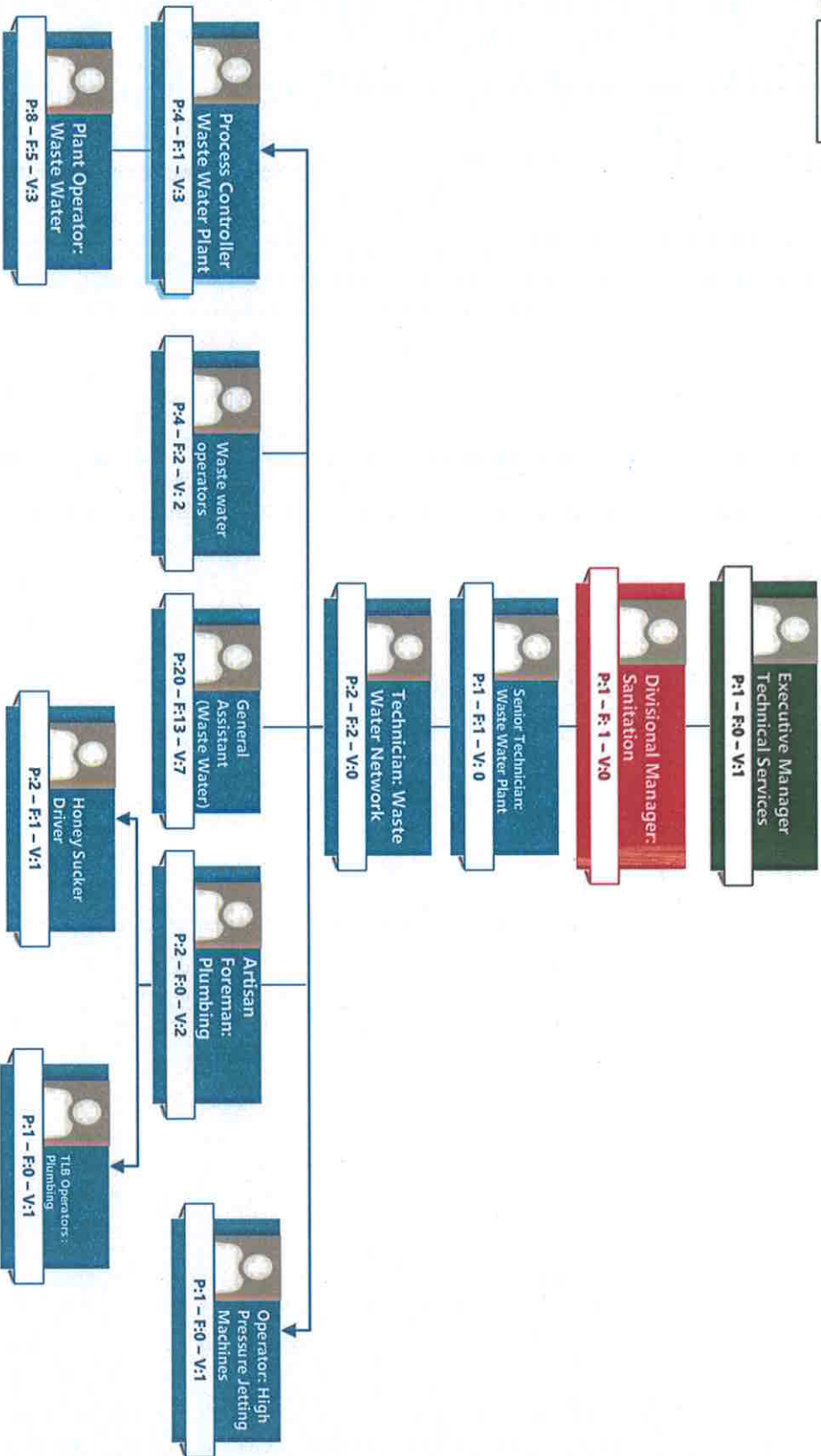


MM



DR JS MLM

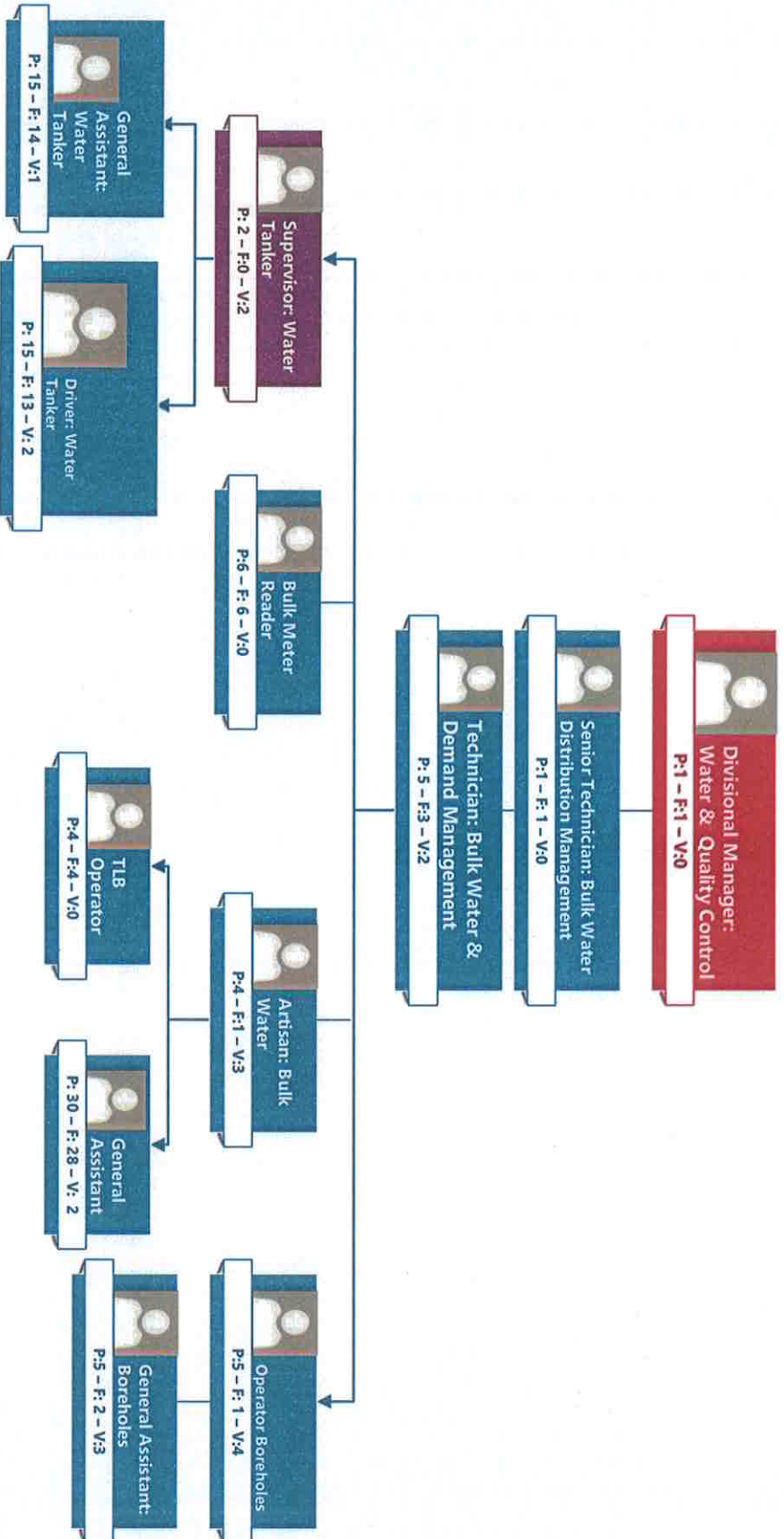
### Technical Services: Sanitation Services (Waste Water)





DRJS MLM

# Technical Services: Bulk Water Distribution Management

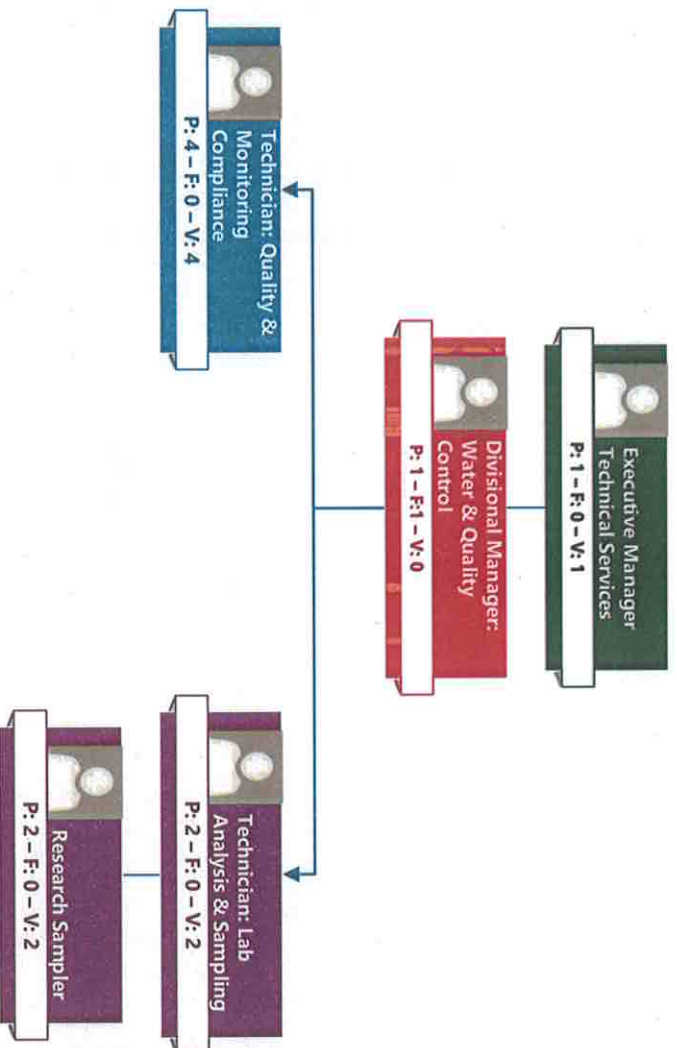


*Handwritten signature*



DR JS MLM

### Technical Services: Water & Quality Control



*MLM*



# Community Development Services

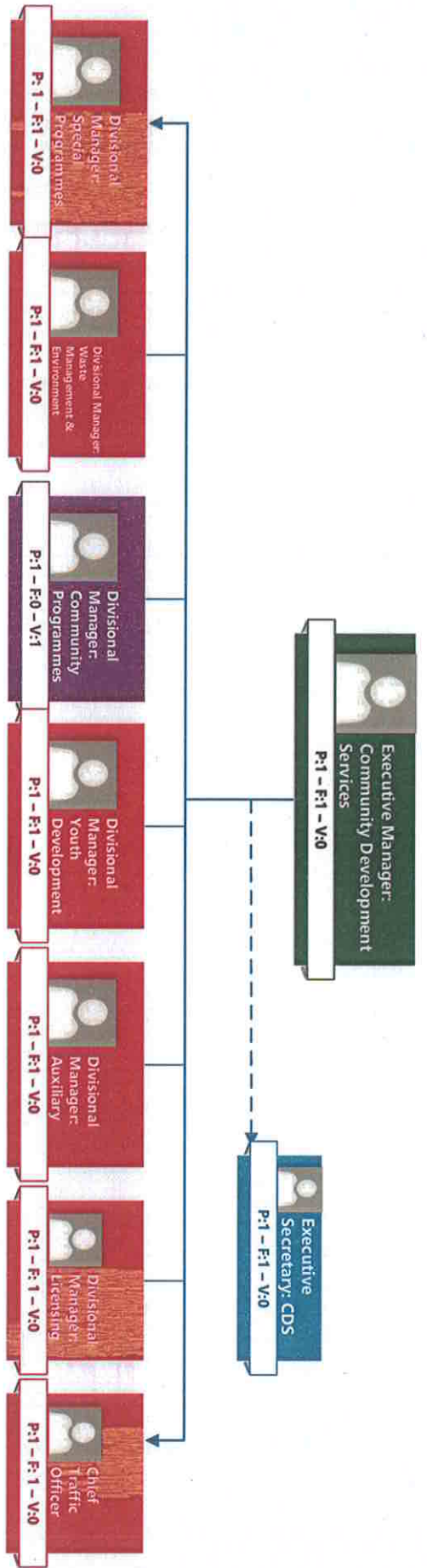
Departmental Statistics:

Filled Posts	Vacant Posts	Total Posts
140	114	254



DR JS MLM

### Community Development Services: Top Structure

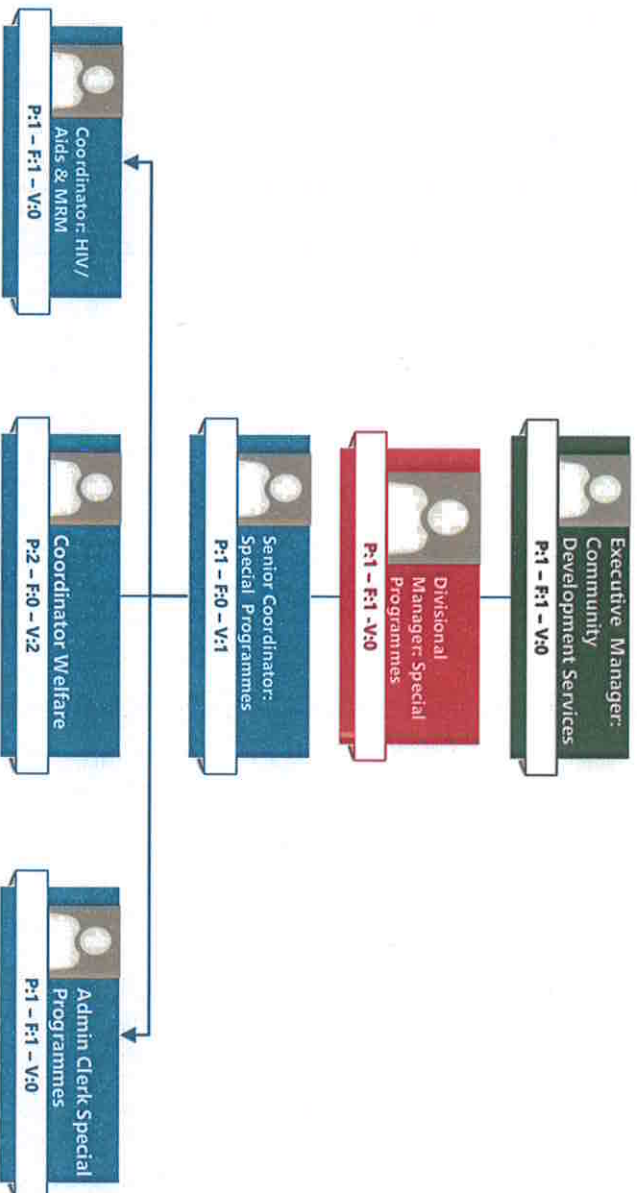


*MLM*



DR JS MLM

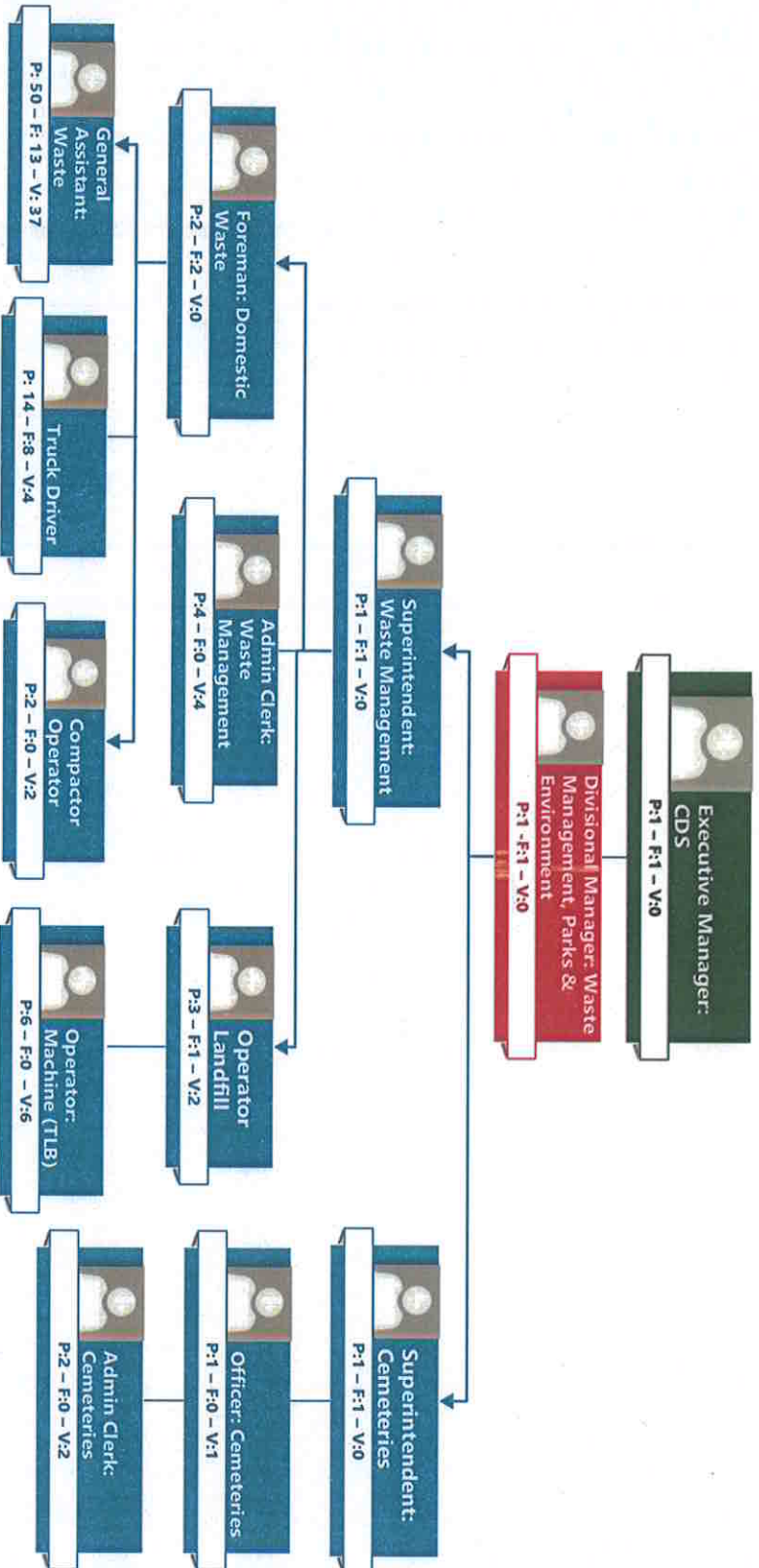
# Community Development Services: Special Programmes





DR JS MLM

### Community Development Services: Waste Management

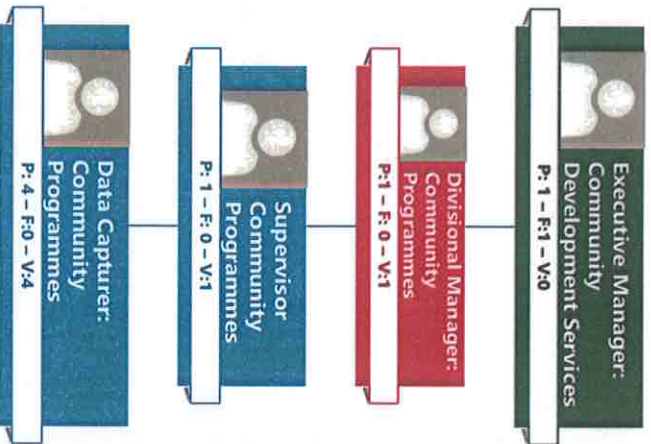


*MLM*



DR JS MLM

### Community Development Services: Community Programmes

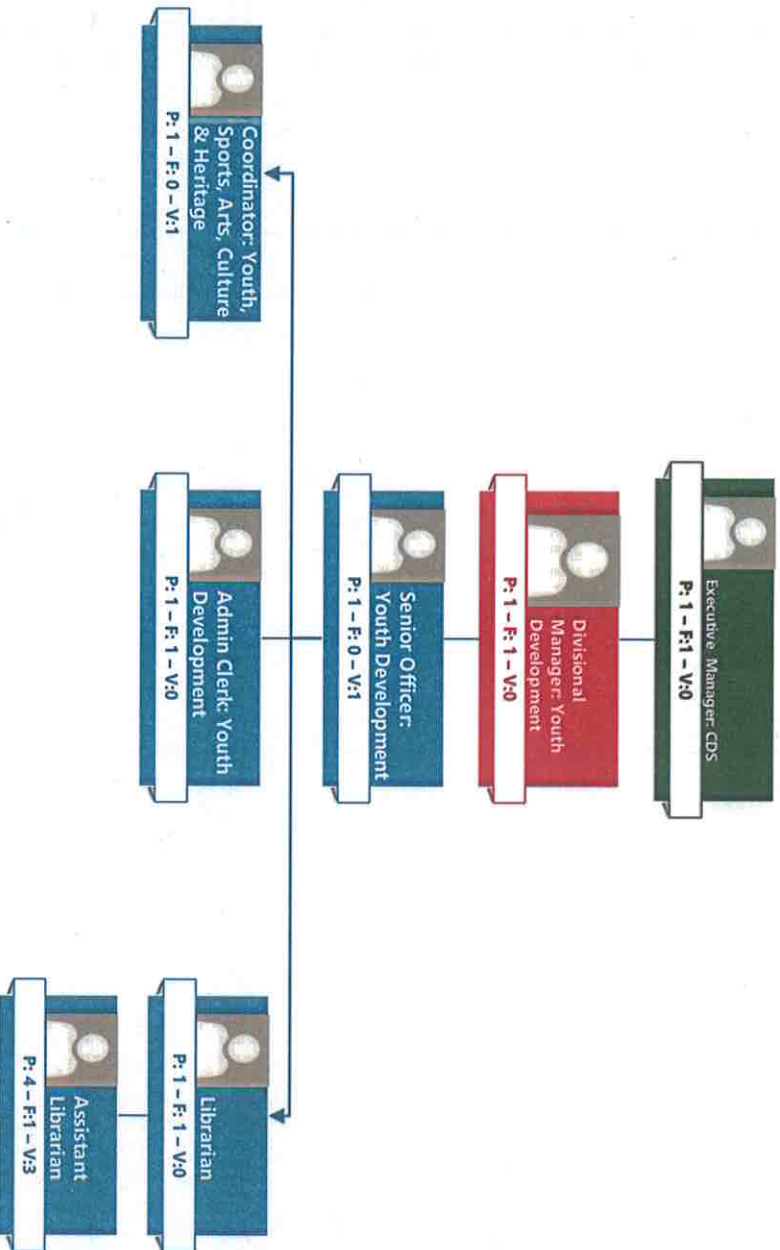


*Handwritten signature*



DR JS MLM

### Community Development Services: Youth Development

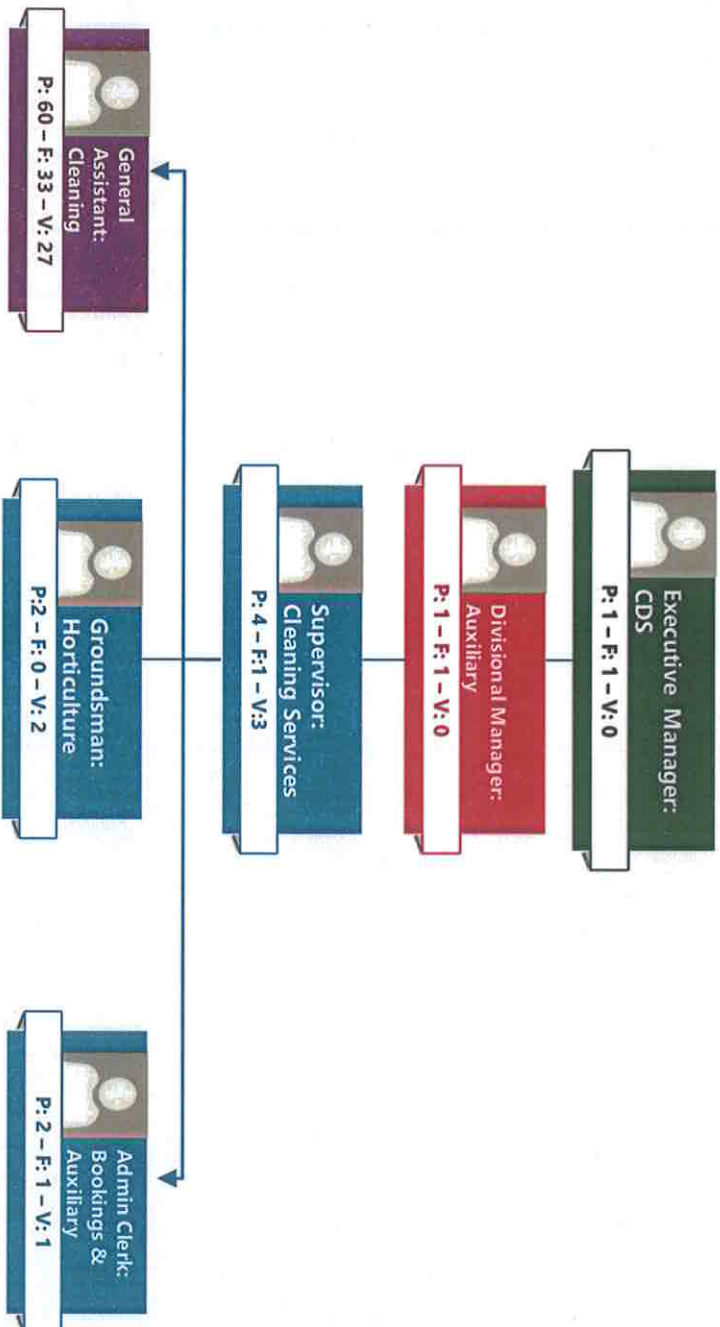


MLM



DR JS MLM

# Community Development Services: Auxiliary

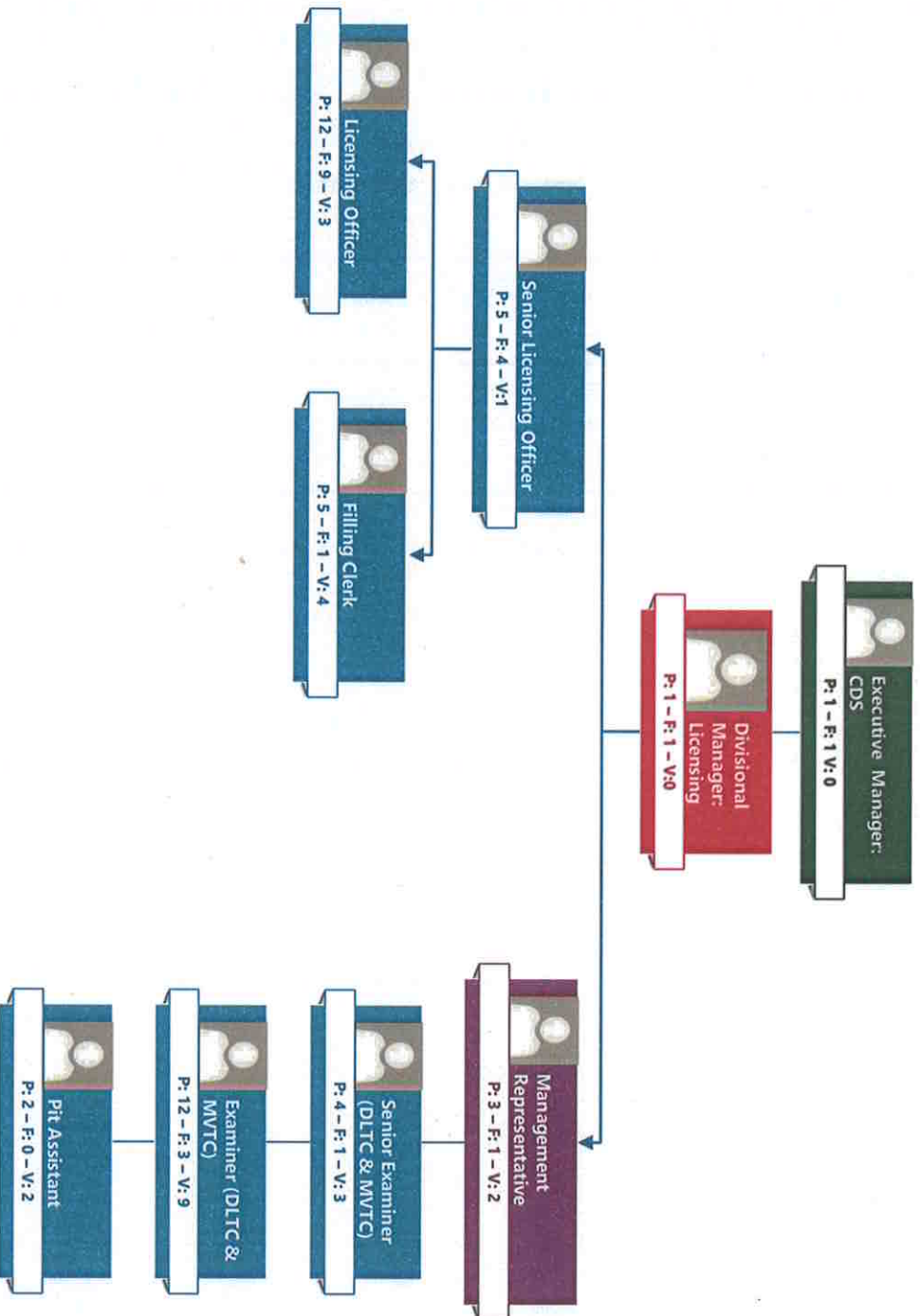


*Handwritten signature*



DR JS MLM

## Public Safety: Licencing Department



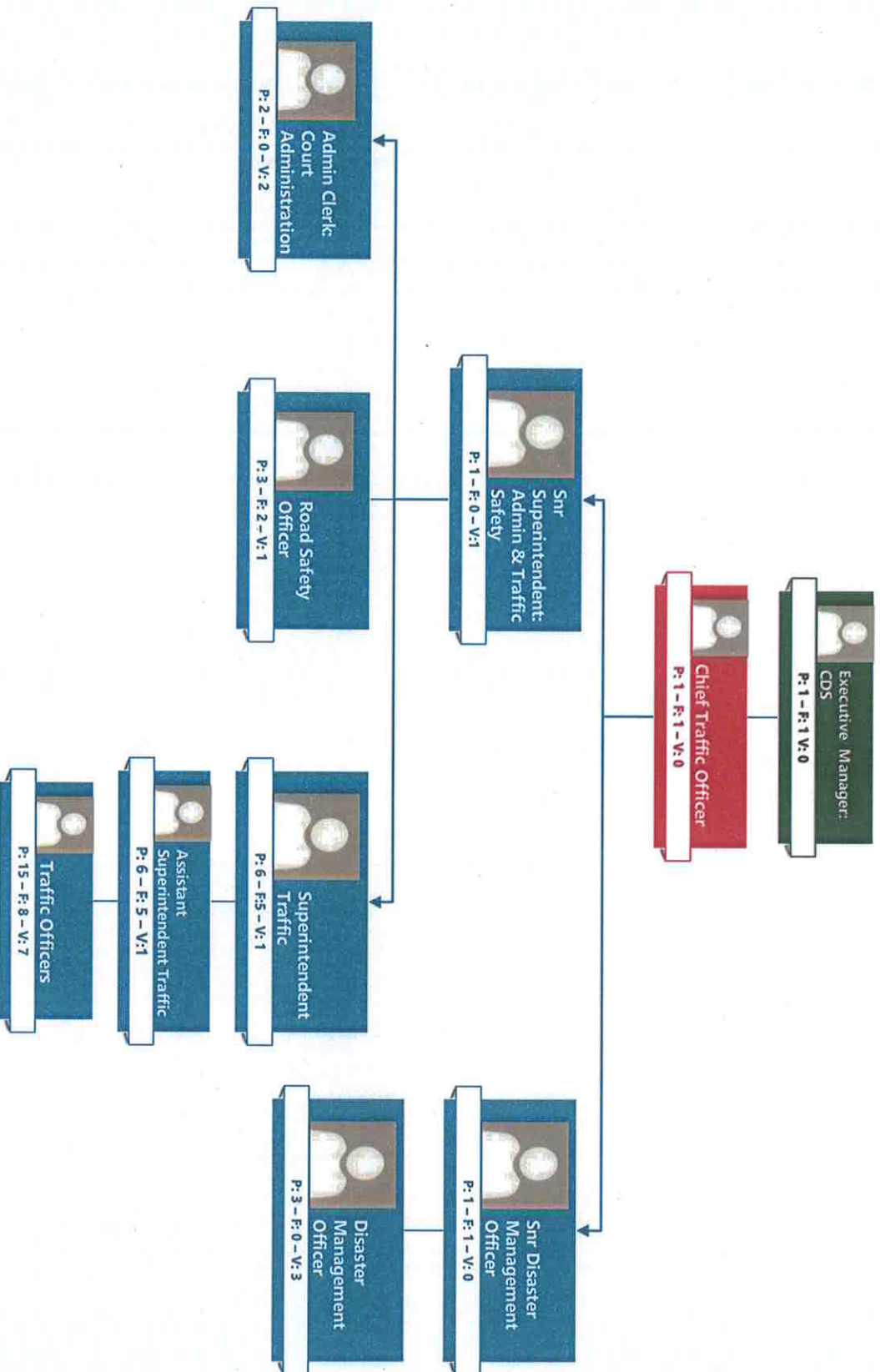
*MLM*





DR JS MLM

### Community Development Services: Public Safety



*MLM*

# Economic Development & Planning

Departmental Statistics:

Filled Posts	Vacant Posts	Total Posts
21	18	39

*MPM*



DR JS MLM

### Economic Development & Planning : Top Structure

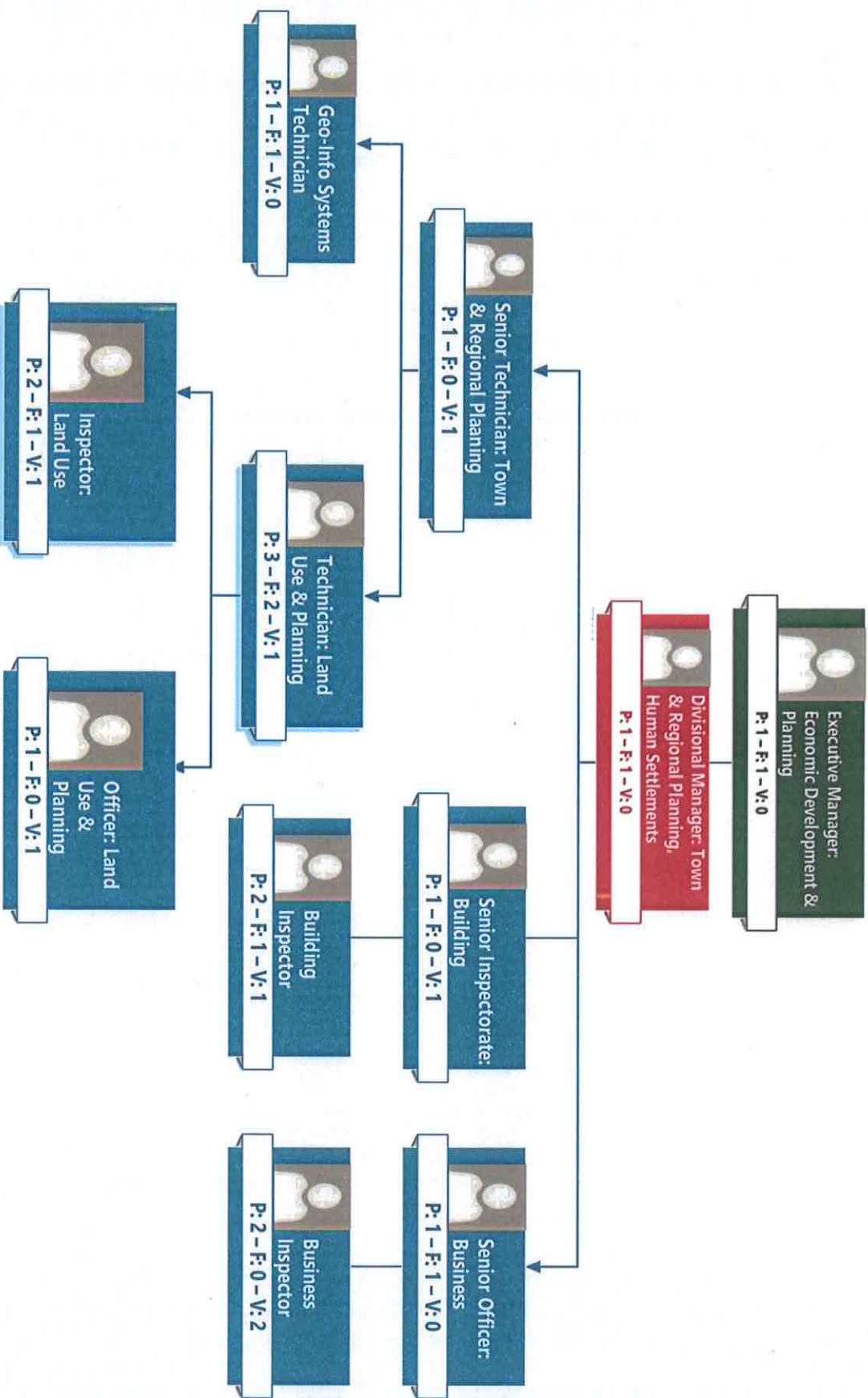


MLM



DR JS MLM

### Economic Development & Planning: Town & Regional Planning, and Human Settlements

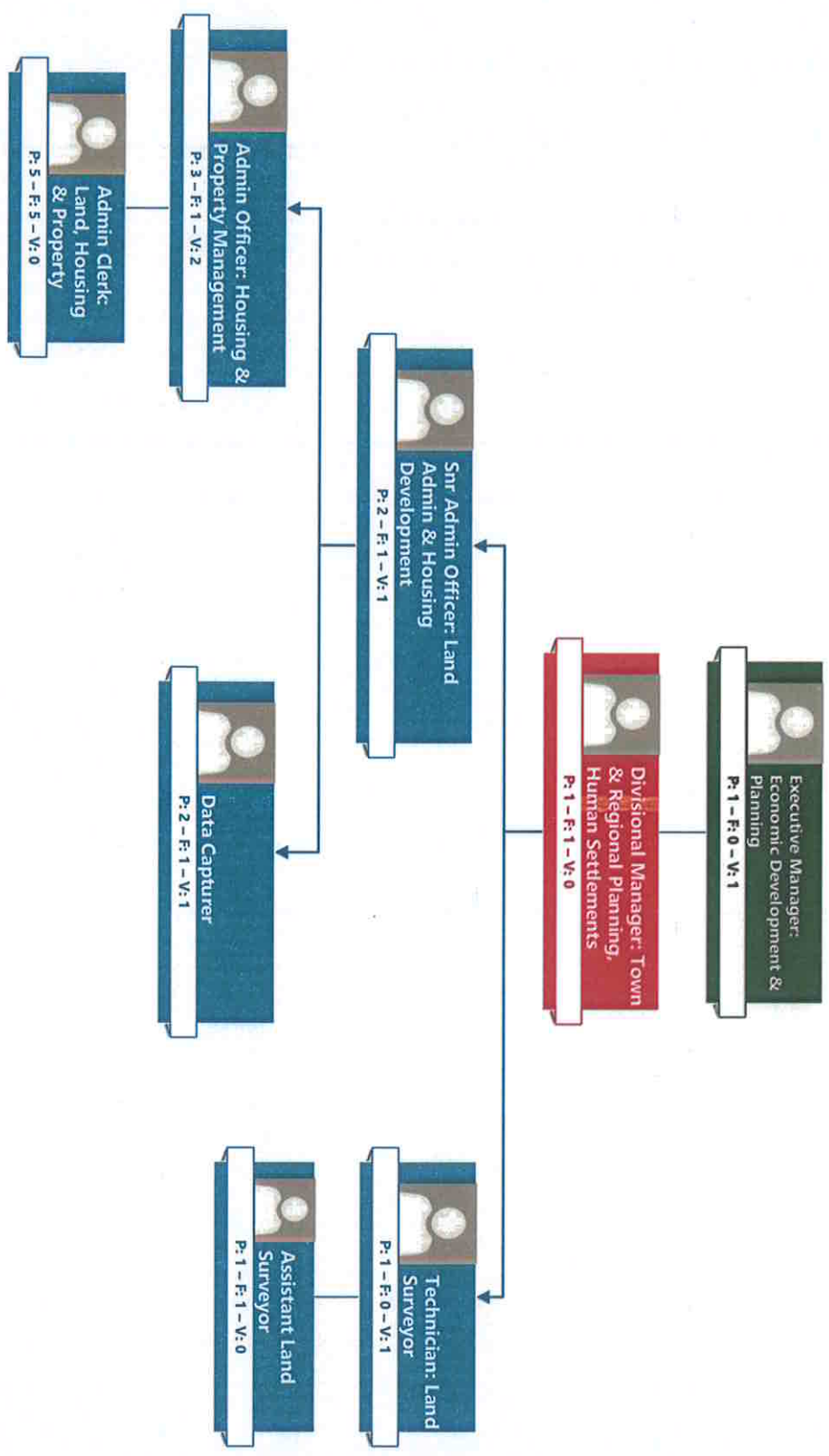


DR JS MLM



DRJS MLM

### Town and Regional Planning & Human Settlements Continuation....

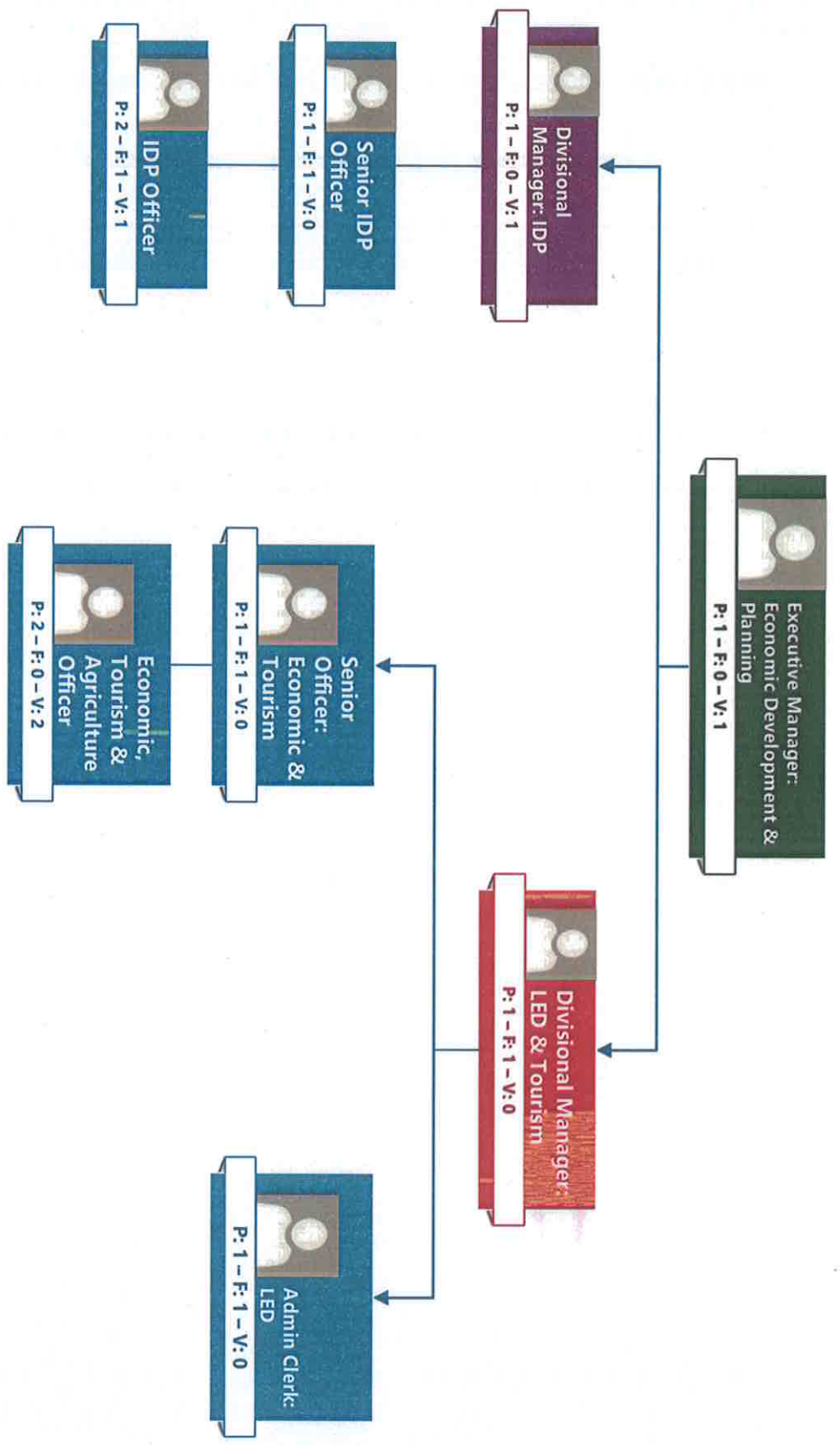


*M M*



DR JS MLM

# Economic Development & Planning: IDP & LED



*MWT*

**END**